



2022 CASS COUNTY FAIR

144th and Highway 1 WEEPING WATER, NE

"Fun for the Whole Herd"

www.cassfair.com

August 10-13th, 2022
Tuesday through Saturday

Sponsored by Cass County
Agricultural Society



Schedule	2-6
Fair Board	8
Regulations	9-10
Parade and Miss Cass County Special	11
Contests	11-15
Quilts	16-17
Photography	18
Textile & Fiber Arts	19
Crafts	20
Fine Arts	21
Food Preservation	22
Foods Dept	23-24
Flowers	25
Agriculture	26-28
Rabbits and Poultry	29
Coloring Pages	31-33
Fair Sponsors	37-56

Sunday, August 7th, 2022

Fair Buildings not open & Carnival not open

1:00pm- 4-H Horse Judging

4:00pm—6:00pm **OPEN CLASS** enter ALL exhibits, including quilts, crafts, fine arts, photos, etc. in Expo Center.

EXCEPT Garden produce, Agriculture products, Flowers, and Baked Goods. *(These products can come in on Sunday, but won't be judged until Tuesday)*. Planted Whiskey Barrels can be entered at this time or Tuesday 8-10am

4:00pm—6:00pm **4-H** enter ALL exhibits **except** small animals, rabbits, poultry & clothing

4:00pm-6:00pm Enter Special Contests (Expo Center): Quilt Block, Religious, Holiday, etc.

4:00pm-6:00pm All Lego and K-NEX items are to be entered in the Commercial Building (East of Expo)

Monday, August 8th 2022

Fair Buildings not open & Carnival not open

Judging in Progress in Exposition and 4-H Building

8am to 10am Enter 4-H Flowers and Fresh Garden Produce
Can be enter on Sunday night

Tuesday, August 9th, 2022

Fair Buildings and Carnival **NOT** open

8am—10am **OPEN CLASS** enter Garden produce, Agriculture products, Flowers, and Baked Goods, Expo Center

8am -10am Enter Special Contest: Planted Whiskey Barrel

10:30am Judging in Open Class

9:00am 4-H Horse Show

10:00am-9:00pm Swine must be at Fairgrounds

5:00pm Sheep and Goats Check-In

5:00pm Meat goats weigh in

6:30pm **Cake Auction/Award Presentation (Open Air)**

8:00pm—10:30pm **4-H and OPEN CLASS** enter Rabbits and Poultry

Wednesday, August 10, 2022

Fair Buildings open to public 10am to 10pm.

Golf-on-the-Go 11:00 to 5:00pm

QuickDraw Caricatures 3:00pm to 8:00pm Expo Building

Papa Bear Craving– 10am to 6:00pm

7:00am-9am 4-H Swine Weigh-In and Hog Scanning

7:00am All Dairy Goat, Dairy Cow, and Other

Goats in place on grounds

8:00am Dairy Goats, Dairy Cows, and Goat Shows

10:00 am– 10:00pm– Remember the Fallen Exhibit-Ag Hall

11:00am Meat Goat Show

1:00pm 4-H Sheep Show

2:00pm Check in Feeder Calves

1:00pm-7:00pm– Golf on the go

3:00pm-8:00pm Character Drawing-

5:30pm 4-H Bucket Calf and Feeder Calf Shows

Bucket Calves arrive by 4:00 pm

5:30pm-6:00pm Enter Casseroles for contest in the

Expo Center Kitchen

6:00pm Casserole Judging—Open to the Public, Expo Kitchen

6:00pm to 10pm Carnival Open

8:00pm Extreme Bull Riding on the pull track

7:30pm Cass County Queen Contest in the

Open Air Auditorium

8:00pm Best Tomato Contest in the Cass County-

During intermission of Queen Contest-see Rules on page 13

Thursday, August 11, 2022
Fair Buildings Open to Public 10am to 10:00pm

Golf-on-the-Go 11:00 to 9:00pm

QuickDraw Caricatures 3:00pm to 8:00pm Expo Building

Papa Bear Craving– 10am to 6:00pm

8:00am **Swine Show**

8:00am Market Beef and Breeding Beef
need to be at the fairgrounds

8:45am Poultry Check-in (arrive Tuesday)

9:00am **Poultry Showmanship 4-H and Open Class**

10:00 am-10:00pm– Remember the Fallin Exhibit-Ag Hall

10:00am Market Beef Weigh-in/Breeding heifer check in

1:00pm-5:00pm **Sam's Amusement Carnival Kids' Day**
wristband \$25 (Closes 5-6pm)

3:00pm-8:00pm QuickDraw Caricatures

3:00pm-4pm **LEGO CONTEST** Commercial Bldg.
see rules page

6:00pm- 10pm Carnival Open

6:00 pm– **Horn T Mutton Bustin' Sign-up**-horse practice arena

6:00pm **Winners of Special Grandparent or Friend Essay**
announced in the Expo Building

6:00pm-6:30pm Enter Pies for Contest-Expo Center Kitchen

6:30pm **Pie Judging open to public-Expo Center Kitchen**

7:00 pm **Outlaw Truck & Tractor Pull** at the Pulling Track
(north end of the grounds)

7:30 pm **Horn T Mutton Bustin' Starts**– horse practice arena

7:30 pm– **Hypnotist**– open air

8:00pm Coloring Contest Entries due

9:30-11pm– **Band on at the pull track.**

Friday, August 12, 2022
Fair Buildings Open to Public 10am to 10:00pm

Golf-on-the-Go 11:00pm to 9:00pm each day

Papa Bear Craving– 10am to 6:00pm

QuickDraw Caricatures 3:00pm to 8:00pm Expo Building

8:00am **4-H Market & Breeding Beef Show**

9:00am **4-H and Open Class Rabbit Show**

10:00am-10:00pm Remember the Fallin Exhibit– Ag Hall

1:30-2:00pm-Special Chocolate Cookie Contest-Expo

2:00pm **Judging Special Chocolate Cookie**

2:00pm Skill-A-Thon

3:00pm—4pm **LEGOS CONTEST** Commercial Bldg.

4:00pm **Round Robin Contest**

4:30pm **Final judging of LEGOS and awards made**

4:30pm **EDIBLE BUG CONTEST—** Outside Expo Kitchen

5:00-6:00pm Edible Bug creation time -Expo Center Kitchen Area

6:00pm-10pm Carnival Open

6:30pm-8:30pm Children's Pedal Pullers Followed by Adult Pedal Pullers

6:30pm **Coloring Contest Awards** (Fair Office in Expo)

6:30pm **Pioneer Farm Family Awards—**Open Air Auditorium

8:00pm **Figure Eight Race** at Pull Track

8:00pm - 10pm **Dueling Pianos** in Open Air

7:00pm **National Barrel Horse Association Show** in Horse Arena

4-H invited to participate.

For information, call Kris Harms at 402-263-3730

9:30pm- 11pm **Band** at Pull Track

Saturday, August 13, 2022

Fair Buildings Open to Public 10am to 10:00pm

Golf-on-the-Go 11:00pm to 9:00pm each day

Papa Bear Craving– 10am to 6:00pm

- 8:30-10:00am Registration for Garden Tractor Pull and Mid States Antique Tractor Pull \$10 Hook-in. For information contact Ashley Heitman 402-440-6652**
- 8:30am Register Livestock Judging Contest**
- 9:00am Livestock Judging Contest - Register at 8:30am**
- 10:00am Garden Tractor Pull and Mid States Antique Tractor Pull**
- 10:00am-10:00pm Remember the Fallin-Ag Hall**
- 10:00-10:30am Enter Cupcake Contest, any age. Expo Center Kitchen**
- 10:00am—5:00pm Beef Science Lab North of Expo**
- 10:30am Judging of Cupcake Contest Expo Center Kitchen**
- 11:00am 4-H Fashion Show and Performing Arts Contest-open air**
- 1:00pm-5:00pm Sam' s Amusement Carnival Kids' Day**
wristband \$25 (Carnival closes 5-6pm)
- 2:00pm Draft Horse Exhibition - Horse Arena**
- 2:00pm Livestock Premium Sale**
- 3:30pm Lego Designer Championship-commercial Building**
- 4:00-5:45pm Parade Line-up . NO PREREGISTRATION Required.**
Parade order goes as participants arrive. Please be on time. Horse riders must be Level 3 or accompanied by an adult lead line. For more information, call Kevin Alberts-402-690-5480
- 6:00pm Parade**
- 7:30pm Papa Bear Craving Auction (after the parade)**
- 7:30pm 4-H Fun Night-horse arena**
- 8:00pm Figures 8's on pull track**
- 9:30pm Concert By John King –open air**

Sunday, August 14, 2022

6:00am-9:00am Continue Release of Horses and other animals

7:00am- 2:00pm Clean Up of total grounds-

Bicycle drawing for all kids who help with grounds cleanup after the fair.

NEBRASKA PIONEER AND HERITAGE FARM AWARD

Sponsored by AKSARBEN Foundation and Nebraska Farm Bureau, the program honors farm families in Nebraska whose land has been owned by members of the same family for 100 years (Pioneer) and 150 years (Heritage). To date, more than 9,000 families in all 93 Nebraska counties have been honored at their respective county fairs. Each farm honoree receives one engraved plaque and one gatepost marker as permanent recognition of their milestone.

Cass County will have families honored again at this year's fair. Check your family records and write to our Fair Board Secretary to find out more information. His name and address are as follows:

Kevin Albert
13516 132nd St
Louisville, NE 68037
402-234-7288



Funded in part by Cass County Tourism
www.visitcasscounty.com

CASS COUNTY AGRICULTURAL SOCIETY

OFFICERS

Mark Rathe, President, Weeping Water - 402-267-2715
Gary Sickmann, Vice Pres., Louisville - 402-234-6797
Carol Bley, Treasurer, Murdock - 402-234-4179
Kevin Albert, Sec'y, Louisville - 402-234-7288

Miki Bruns, Fair Board Accountant - 499-6395
Meggan Roeber, Fair Manager - 402-499-1060

DIRECTORS

Josiah Graham - Alvo - 402-570-2484
Steve Hauschild - Weeping Water-402-267-5288
Duane Uhe - Nehawka - 402-227-2013
Susan Platt - Murdock - 402-867-2428
Owen Kunz -Elmwood- 402-840-0245
Scott Lubben - Louisville - 402-287-8315
Dennis Heim - Plattsmouth - 402-297-7648

www.cassfair.com

BOARD OFFICE - 402-267-5120

CASS COUNTY AGRICULTURAL SOCIETY MEMBERSHIP

Cass County Agricultural Society is composed of all Cass County registered voters who are, as such, able to vote at the Annual Meeting. This meeting is held the second Monday in November at 7:00pm at the Expo Center.



2021 Miss Cass County
Jami Twomey
Daughter of
Jay and Linda Twomey
Represented Weeping Water

2021 Cass County Princess
Rylee Hogue

*daughter of
Mark and Keri Hogue
represented Elmwood*



CASS COUNTY FAIR BOARD REVISED APPROVED REGULATIONS

GENERAL

- While the greatest possible care will be taken by the management to protect patrons of the Cass County Fair, each individual will be held personally responsible for his or her own actions. The management will not be responsible for any injury.
- All possible diligence or care will be exercised to prevent loss of injury to articles or animals on exhibit, but it is hereby expressly stipulated that the management of the Fair will in no way be responsible should any loss or injury occur.
- No monstrosities or non-approved solicitors will be allowed on the fair grounds.
- Articles that have won premiums in previous years will not be awarded premiums again. Distribution of promiscuous advertising matter is strictly prohibited. No tacking of advertising matter on buildings will be permitted. Exhibitors may distribute advertising matter from their places of exhibit only.
- Exhibit animals only on fair grounds! **No pets of any kind are allowed.** Vision-assist animals are exempt with documentation.
- ATVs, UTVs, golf carts or other personal motorized vehicles are for fair board use only and are not permitted on the grounds for personal use. Mobility-assist vehicles are allowed with proper documentation.

SHOW ANIMALS

- It is illegal to use drugs not approved by USDA in meat animals.
- No stall in cattle barn will be cleaned during the auction.
- No premiums will be paid for poultry or rabbits if cages are not cleaned at the time they are released. Must be inspected by Superintendent to receive premiums.
- The age of all animals shall be computed from the last day of the month in which they were born.
- No animal or article not listed in premium list will be entered for premium except as otherwise provided.

PROTESTS

- All protests must be made in writing and accompanied by a deposit of \$5.00 which will be forfeited if protest is not sustained. Such protest must state plainly the cause of complaint or appeal, and must be filed with the Secretary of the Fair Board by noon of the last day of the Fair. Written protest must include:
 - * Names of persons involved
 - * Description of the concern
 - * Documentation of the situation of what occurred.
 - * Recommendation for correction
 - * Specific action rule, etc. in question
 - * Additional persons the committee may contact for clarification
 - * Procedures and/or steps carried out by the person involved prior to submission to the Fair Board
- When a protest is to be made against the competition or an animal or article in any class, notice of the same must be filed with the Superintendent of the Department before the class is passed upon, that the judge may be instructed to place a reserve award that premiums may be properly distributed in the event of the protest being sustained.

(continued next page)

VENDORS

- No person will be allowed to do any soliciting for any paper, merchandise, or articles unless they first obtain permission from the Secretary and pay the required fee.
- Any privilege or concession obtained under false representation will be revoked by the management, and any and all monies paid for the same will be forfeited to the Cass County Agricultural Society.
- CCAS will not provide 240 volt power to anyone without authorization at the time of rental contract approval.
- Outside vendors with a trailer that is air-conditioned shall pay \$25/day camping fee to cover cost of electricity.

AGE BRACKETS FOR ALL DEPARTMENTS, except Photography

Participant - 5 years and under

Youth - 6 through 16 years

Adult - 17 and above

Photography age brackets: Youth (15 & under) Adults (16 & up)

The Cass County Fair is committed to being inclusive. There will be special consideration for those with disabilities. Please advise at entry time.

RIBBONS TO BE AWARDED AS FOLLOWS:

Grand Champion - Purple Ribbon with Rosette and \$7.00

Reserve Champion - Lavender Ribbon with Rosette and \$5.00

Best in Class - Purple with \$3.00

First Place - Blue Ribbon with \$2.00

Second Place - Red ribbon with \$1.50

Third Place - White Ribbon with \$1.00

Each lot will be judged for blue, red, and white. Each class may have a purple ribbon chosen for "Best in Class". After judging is completed, the Grand Champion Ribbon and Reserve Champion will be chosen from the Best in Class Purple ribbons.

ALL JUDGES' DECISIONS WILL BE FINAL!! NO EXCEPTIONS.

Exhibits are released at 10pm Saturday evening or 1:00 to 2:00pm Sunday afternoon
No exhibit may leave before 10pm on Saturday evening. In such case, all premium earnings will be forfeited.

NEBRASKA STATE FAIR "BEST-IN-COUNTY" RULES

As of 2012, the Nebraska State Fair (NSF) Best in County Needlework contest no longer exists. Instead, it has been replaced by two separate contests:

- **Best in County Quilts:** This contest will be part of the Quilt Department and entries will be entered and displayed in the Quilt Hall of the Exhibition Building.
- **Best in County Textile Arts:** This contest will be part of the Textile Arts Department and entries will be entered and displayed in the Fonner Park Concourse, Textile Arts area.

Rules for each contest:

- The exhibitor must be a resident of the county submitting the entry.
- If a second person is involved in the exhibit (i.e. a commercial quilter), that person must be a Nebraska resident.
- If the first place exhibitor declines, an alternate exhibitor may enter.
- The entry in each contest must be one that would qualify to be entered into an existing class in the respective NSF departments. Not all county fair department classes are consistent with state fair department classes (i.e. quilted table runners and some other quilted items are in the Textile Arts Department at the state fair). Review the various classes available in the 2021 Quilt and Textile Arts Departments. See Domestic Entry Books at www.statefair.org.
- All entries must comply with all rules of the respective NSF departments.
See www.statefair.org for entry process and entry forms.

CASS COUNTY AGRICULTURAL SOCIETY PUBLICATION

Funded in part by Cass County Tourism (see www.visitcasscounty.com)

EVENING PARADE INFORMATION

Parade will be Saturday, August 13, 6:00pm.

Parade will form in the north end of fair grounds.
Line-up will be from 4:00pm to 5:45pm. Chairman of parade is Kevin Alberts 402-234-7288. Parade Entry form is available on cassfair.com

MISS CASS COUNTY QUEEN CONTEST

*For Information, call Loxley Grafe -Drahan
319-480-9435*

1. Contestants, as defined by Cass County Agricultural Society, must be between the ages of 17 and 21 as of July 1st, female, never married, and no children.
2. Must reside in a community of Cass County. (If the parents reside in Cass County, and the girl is working or going to school outside the county, the girl is eligible for the contest.)
3. Must have graduated from high school by the end of the current school term.
4. Each community may have one contestant, and she must be sponsored by an organization.
5. Must present a brief resume of the girl's background and activities, plus a billfold size picture to chairman of the Miss Cass County Contest by July 16.
6. The contestants must be present on the day of the contest for the interview and that same night for the pageant and appear in the parade.
7. Miss Cass County will help distribute ribbons and help as needed.
8. Contestant must present a documented experience of service to the fairgrounds prior to the fair. This document should include essay and photos. Contact Fair Manager Meggan Roeber for scheduling your activity . Phone 402-499-1060

COMMERCIAL BOOTHS AND CONCESSIONS

1. All commercial booths and concessions MUST have reserved space by July 31.
2. For reservations, contact: Fair Board at 402-267-5120 or Meggan Roeber
3. Specific rules and regulations concerning commercial booths and concessions will be agreed upon between Meggan Roeber and the owner and operator of the booth or concession.
4. Rates for commercial space will be negotiated between the exhibitor and Meggan Roeber.



Special Contests

THESE SPECIAL CONTESTS ENTERED AND JUDGED IN THE EXPO CENTER

*All judging is open to the public,
Except where noted.*

Ribbons, Awards, and Premiums are as follows:
1st Place Rosette and \$10.00
2nd Place Rosette and \$7.00
3rd Place Rosette and \$5.00

SPECIAL THEME CONTESTS

Enter on Sunday, 7th, 4-6pm ONLY!! The following special themed items will be entered only in their particular theme category. They can be of any medium such as textiles, paint, wood, glass, plastic, photo, etc. Take the item to the appropriately marked entry table on August 7, 4-6pm. This judging is NOT open to the public.

Enter Sunday, August 7
Between 4 and 6pm

**The Best Jar of Jam,
either Wild or Domestic Plums.
Will be opened and tasted
Paraffin sealing prohibited.**

- 1st Prize - \$40.00 & Grand Champion Ribbon and Trophy
2nd Prize - \$20.00 & Reserve Champion Ribbon
3rd Prize - \$10.00 and White Rosette Ribbon

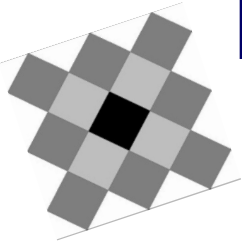
This contest is in memory of Francis L. Reinke,
father of Mary Frances Reinke

New Project Potholder

Enter Sunday 7th 4-6:00pm

- Make two Potholders to judge as a pair
-6"-10" in any shape
- Fabric should be 100% quilt quality cotton
Batting should be 2 layers of cotton or wool
- Must have hanging loop or ring

Sunday, cont.



Quilt Block Contest

Enter on **Sunday, August 7 between 4 and 6pm** in the **Expo Building Quilt Department**.

Create a quilt block that is 12.5" square (will finish at 12")

Color scheme for this year's TRADITIONAL RED AND GREEN. Prizes will be awarded for 1st, 2nd, and 3rd places. It is requested that you donate your block entries to be joined into a quilt to be raffled off at the 2023 fair. You can enter more than one, as long as the designs are different. The more blocks, the bigger the quilt!

Raffle tickets will be on sale for a quilt from the 2021 fair contest when the colors were PASTELS.

Special Nebraska Sports Theme

This contest was new in 2017. It is to encourage all to share their hobbies in which they express their "fan-ship" of their favorite Nebraska athletic team or individual sport. That means for ANY HIGH SCHOOL OR COLLEGE IN NEBRASKA. This contest includes all kinds of creative arts including wood, plastics, paper, fabrics, fibers, paint, photos, etc. Exhibitor may enter up to 3 items. Judging not open to the public

Enter on **Sunday, August 7 between 4 and 6pm** in the **Expo Center**.

Special Religious Item Contest

Enter in the Expo Center on **Sunday, August 7, 4-6pm**

No Santa or Mrs. Santa Claus, elves, sleigh, reindeer or dressed Easter bunnies permitted for entry in this contest.

- | | |
|------------------------------|-------------------------|
| 1. Needlework | 7. Beads and/or sequins |
| A. Small item | 8. Textile Painting |
| B. Large item | 9. Puzzle |
| 2. Wall Hanging or Bell Pull | 10. Knitted item |
| 3. Pillow | 11. Crocheted item |
| 4. Picture | 12. Paint-by-Number |
| 5. Plastic Canvas | 13. Wreath |
| 6. Latch Hook | 14. Other |

Placings are: Grand Champion: \$20.00
Reserve Champion: \$10.00
Third Place: \$5.00
Fourth Place: \$3.00

Sponsored by Mary Frances Reinke

Grandma/Grandpa and ME!!!

Just the contest for a child and his/her grandparent to create something together!

Make a project of your choice along with your grandchild. Provide a written narrative with or without pictures describing the process; who did which part, etc. Use your own imagination on picking a project. Examples: project using wood, fabric, food, nature items, craft supplies, etc.

Enter your project on **Sunday, August 7, 4-6pm** at the Expo Center Special Contest Table.

Any questions, call Carol Bley at 402-234-4179

Sponsored by Mirissa Scholting

NEW!!

DECORATED TREE CONTEST

Enter **Sunday, August 7, 4-6pm** in Expo

Rules:

- Tree no more than 5' tall & 2 feet wide. Will be downgraded if too big.
- Entrant can enter up to 3 trees, each of different theme.
- Can be of ANY theme, not just Christmas i.e. Easter, Valentine, Halloween, July 4, garden, etc.

Grandparent or Special Senior Friend

Short Essay & Picture

Opportunity for children to share their thoughts about a particular grandparent or special senior friend by words and a hand-drawn picture of that person. The Fair Board invites children to be a part of this. Entry packet available at Fair Office or inside north doors of Expo Bldg. Sunday, August 7, 4-6pm or online at www.cassfair.com/grandparent. Turn in packets same place by 5pm on Wednesday, August 10.

Three age categories: 5 & under, 6-9, and 10-12.

NEW!!

WESTERN DAYS & WAYS

This special contest highlights the early days of our country through the lives of cowboys and, of course, the pioneers. Entries can be of any medium EXCEPT leather. Can be antique, fabric, photographs, paintings, food, essays, and/or "you-name-it"!

Items should NOT have been exhibited at the Cass County Fair in prior years. **Enter Sunday, 4-6pm, August 7.**

1st Place: \$20.00 - Grand Champion Trophy and Ribbon
2nd Place: \$10.00 - Reserve Champion Ribbon
3rd Place: \$ 5.00 - White Rosette Ribbon

Sunday, cont.



Any Holiday Item Contest

Enter Sunday, August 7, 4-6pm in Expo Center

This contest includes all kinds of creative arts including wood, plastics, paper, fabrics, fibers, paint, photos, etc. It includes all holidays, such as Valentine, St. Patrick's Day, Easter, Independence Day, Halloween, Thanksgiving, Christmas. Judging not open to the public.

I just saw RED! Red Needlework, that is!

Redwork is a simple style of embroidery stitchery that uses, for example, outline, backstitch and French knots, all done in red. This was popular between 1855 and 1925. Restrictions: No counted or stamped cross stitch and NO quilts. May not have been judged previously at the Cass County Fair

- Grand Champion - \$50 & a trophy
- Reserve Champion - \$25.00
- 3rd Place - \$10.00

Sponsored by Mary Frances Reinke

Tuesday 8-10am



Planted Whiskey Barrel Liner

Enter on Sunday 4-6pm or Tuesday 8-10am on the north side of the Expo Building. Barrel Liners are available during office hours at the Extension Office, just north of the fairgrounds. Liners will be put into the whiskey barrels and placed around the fairgrounds after judging. This is a contest that also provides attractive planters around the grounds. You can purchase the liner for \$12.00, or just put a \$12.00 deposit on a liner and it will be returned to you when you return the liner to the fairgrounds or Extension Office.

- Classes:
1. Bee Loving
 2. All Foliage,
 3. Most Creative Use of Materials
- Prizes: \$30 First Place
\$10 Second Place
\$5 Third Place

Sponsored by Campbell's Nursery

Tuesday, 8-10am



NEW

Best Tasting Tomato in the Cass County

Wednesday, August 10th
during intermission of Miss Cass County
Check in around 7:30 pm east side open air by Frontier Stand

- 1st Prize \$100, Grand Champion and Cup**
 - 2nd Prize—\$50 Reserve Champion**
 - 3rd Prize-\$25 Purple Ribbon**
- You can only enter one tomato per person**
Tomato has to be grown from your garden.

- Class 1: Heirloom-(2)
2: Slicing-(2)
3: Cherry, Grape-(6)
4: Roma-(4)
5. Other-(2)

Tomato will be cut and eaten!

If contest takes longer than intermission. We will resume after the crowning of Miss Cass County

Jonathan Apple Contest

Enter on Tuesday, August 9 between 8-10am,
A plate of 3 Jonathan Apples.

- 1st Prize - \$40.00, Grand Champion Ribbon and Trophy
- 2nd Prize - \$20.00 Reserve Champion Ribbon
- 3rd Prize - \$10.00 White Rosette Ribbon

This special contest is in memory of Mrs. Francis L. Reinke, mother of Mary Frances Reinke.

Sponsored by Mary Frances Reinke

CASSEROLE CONTEST



Enter **Wednesday, August 10**
5:30pm to 6:00pm
Expo Center Kitchen
MUST INCLUDE RECIPE

Judged at 6:00pm. Open to Public.
 Lot 1. Vegetable Lot 4. Fish
 Lot 2. Beef Lot 5. Mexican
 Lot 3. Pork Lot 6. Chicken
 Lot 7. Eggs/Breakfast



Special APRICOT Pie Contest

\$50.00 first prize

Enter at the Expo Kitchen on **Thursday, August 11,**
6:00pm to 6:30pm. Judging at 6:30pm

Judging open to public. Must be a traditional 2-crust pie with only apricot. Recipe must be included, including for the crust. For further information, call Carol Bley at 402-234-4179



Lego Designer Contest

Thursday, Friday and Saturday

Commercial Building

3:00pm-3:30-building Legos

3:30-4:00 Judging of Legos

Teams or Individual allowed

Ages 6 and under
7-12
13 & over

Winner of each group will come back on Saturday the 13th at 3:30 pm for The Grand Champion Lego Designer

Grand Champion - \$20 & Ribbon
Reserve Champion - \$10.00
3rd Place - \$5.00

Pie Contest

Expo Center Kitchen

Enter **Thursday, August 11, 6:00pm to 6:30pm**

Judged at 6:30pm. Open to public

RECIPE MUST BE INCLUDED, including for the crust. For further information, call Carol Bley at 402-234-5079

- | | |
|-------------------------|---|
| Lot 1. Apple (any type) | Lot 9. Any other berry |
| Lot 2. Apricot | Lot 10. Rhubarb (Plain or mixed w/ other fruit) |
| Lot 3. Cherry | Lot 11. Pecan (one crust) |
| Lot 4. Peach | Lot 12. Pumpkin (one crust) |
| Lot 5. Pear | Lot 13. Lemon (one crust) |
| Lot 6. Pineapple | Lot 14. Any custard pie |
| Lot 7. Raisin | Lot 15. Chocolate, any variety |
| Lot 8. Strawberry | Lot 16. Any other Pie |



Note: After the pie contest, pie will be sold "by-the-slice" if the exhibitor so chooses.

Here, Kitty, Kitty!

Enter **Sunday, 7th from 4:00-6:00pm**

This special contest is Purr-fect for you!

Use your creativity and enter completed projects with kittens as the main "star", showing "how I love my kitty". Items may be of any medium, such as photos, fabrics, fibers, essays, and anything your heart desires. May not have entered the item in prior years.

1st: \$20- Grand Champion, Trophy and ribbon
2nd: \$10- Reserve Champion Ribbon
3rd: \$5.- Ribbon

Sponsored by Mirissa Scholting



Friday

“EDIBLE ANIMAL” SPECIAL CONTEST

Enter in Expo Building Friday, August 12

4:30-5:00pm

(Note: time of contest)

Rules: Contestant must provide all components and building base for their bugs or animals.

1. Animals should be created with food components
 - A. Any fresh Fruit & Vegetables
 - B. Pastry, like cake, Twinkies, cookies, etc.
 - C. Unwrapped candy
 - D. Other: breads, pasta, dried beans,
2. Child may practice at home but actual assembly of official entry must be done at the contest. Parent may coach from the sidelines, but creation must be assembled by the child only.
3. Animal should be created on a paper plate or cardboard square no larger than 10"x10".
4. Include 3"x5" card listing the name and/or type of animal, food items used to create it, with any other information pertinent to your creation.
5. Entries will be judged on overall appearance and creativity.
6. One entry per participant.
7. Contestant must provide all components and building base.

Register Friday, August 11, 4:30 - 5:00pm

outside Expo Center Kitchen

Creation time: 5:00pm through 6:00pm

Judging done after creations finished.

Ages 12 and under

Lot 1. Fruit & Vegetables

Lot 2. Pastry & Candy

Lot 3. Other

Prizes will be awarded



SPECIAL COOKIE CONTEST

Expo Center Kitchen

2022 Chocolate Cookies

3 cookies on a small plate or in a plastic bag.
MUST INCLUDE RECIPE

Enter **Friday, August 12**, 1:30pm 2:00pm
Judged at 2:00pm. Open to Public.

AGE CATEGORIES:

Age 16 and under

16 and over

Saturday

Cupcake Contest

Expo Center Kitchen

Enter Saturday, August 13, 10:00–10:30pm

Judged at 10:30pm Open to public



Bring 3 cupcakes for tasting/judging and your display. May be in a cupcake paper or not. If so, use standard paper size (approx. 3" in diameter.) Filling optional.

Presentation: You may bring small props to better tell your cupcake's story.

Recipe: You may scratch bake or "doctor up" a box mix. It is your choice. Recipe is to be submitted with entry.

AGE CATEGORIES:

Age 16 and under

16 and over

OPEN CLASS QUILT DEPARTMENT

See page 7 for prize values and judging process.

- Exhibitor must have made the article himself/herself. If Superintendent has any doubt, the superintendent may determine the entering of the article.
- Entries may not have been entered in this department in any previous year.
- The superintendent will determine if an entry is to be exhibited in the Quilt Department or another department.
- Exhibitors MUST indicate age bracket on entry tag.
- All entries must have been completed in the last 3 years. Only one entry permitted per class and lot number.
- In case of a single entry in a class, the Judge shall determine the merit of a prize.
- Prizes will be the first, second, or third, and Best in Class, depending on the merits of the articles exhibited.
- Management WILL NOT be responsible for any loss or damage that may occur to exhibits while on display, but the usual precautions for the safety of all exhibits will be taken.
- Management WILL NOT be responsible for articles not picked up within a reasonable amount of time after release time. It shall be the responsibility of each exhibitor to make every effort to pick up their articles at release time.

IF POSSIBLE, PROVIDE A PHOTOGRAPH OF THE ENTRY IN A COMPLETELY OPEN STATE SO THAT A COMPLETE DESIGN IS VISIBLE. This will help when display requires the quilt to be shown in a folded state. At least 4x6" photo.

QUILTS (Note 2 size categories) applies to A,B,C CRIB, LAP (C/L), TWIN OR LARGER (T/L)

Example of entry: Class C/L-B, Lot 1

Hand appliqued crib or lap size quilt, Lot 1. Hand appliqued, hand quilted



Class A - PIECED

- Lot 1. Pieced, Hand Quilted
 - Lot 1A. Hand Pieced
 - Lot 1B. Machine Pieced
- Lot 2. Pieced, Machine Quilted
 - Lot 2A. Hand Pieced
 - Lot 2B. Machine Pieced
- Lot 3. Pieced, Quilted by Another
 - Lot 3A. Hand Pieced
 - Lot 3B. Machine Pieced
- Lot 4. Sampler, Hand Quilted
- Lot 5. Sampler, Machine Quilted
- Lot 6. Sampler, Quilted by Another

Class B - APPLIQUE & EMBROIDERY

- Lot 1. Hand Appliqué, Hand Quilted
- Lot 2. Hand Appliqué, Machine Quilted
- Lot 3. Hand Appliqué, Quilted by Another
- Lot 4. Machine Appliqué, Hand Quilted
- Lot 5. Machine Appliqué, Machine Quilted
- Lot 6. Machine Appliqué, Quilted by another
- Lot 7. Cross Stitch, Hand Quilted
- Lot 8. Cross Stitch, Machine Quilted
- Lot 9. Cross Stitch, Quilted by another
- Lot 10. Embroidered, Hand Quilted
- Lot 11. Embroidered, Machine Quilted
- Lot 12. Embroidered, Quilted by Another
- Lot 13. Embroidered by Machine
- Lot 14. Mixed Technique, Hand Quilted
- Lot 15. Mixed Technique, Machine Quilted
- Lot 16. Mixed Technique, Quilted by Another

Class C - OTHER TECHNIQUES

- Lot 1. Whole Cloth, Hand Quilted
- Lot 2. Whole Cloth, Machine Quilted
- Lot 3. Whole Cloth,, Pre-printed Cross -Stitch
 - Lot 3A. Hand Quilted
 - Lot 3B. Machine Quilted
 - Lot 3C. Quilted by Another
- Lot 4. Tied Comforter
- Lot 5. Tied Whole Cloth

VARIED SIZE QUILTS

Class D - MINIATURE QUILTS

Miniature Quilt (Maximum size 24"x24".
Pattern scaled proportionately)

- Lot 1. Hand Pieced
- Lot 2. Hand Quilted
- Lot 3. Machine Quilted
- Lot 4. Quilted by another

Class E - WALL QUILTS

- Lot 1. Pieced, Hand Quilted
- Lot 2. Pieced, Machine Quilted
- Lot 3. Pieced, Quilted by Another
- Lot 4. Sampler Hand Quilted
- Lot 5. Sampler, Machine Quilted
- Lot 6. Sampler, Quilted by Another
- Lot 7. Hand Appliqued, Machine Quilted
- Lot 8. Hand Appliqued, Quilted by Another
- Lot 9. Machine Appliqued, Hand Quilted
- Lot 10. Machine Appliqued, Machine Quilted
- Lot 11. Machine Appliqued, Quilted by another
- Lot 12. Embroidered Hand Quilted
- Lot 13. Embroidered, Machine Quilted
- Lot 14. Embroidered, Quilted by Another
- Lot 15. Mixed Technique, Hand Quilted
- Lot 16. Mixed Technique, Machine Quilted
- Lot 17. Mixed Technique, Quilted by Another

(Quilts continued next page)

OPEN CLASS QUILT DEPARTMENT

Class F - SPECIAL TYPES

- Lot 1. Doll Quilts - All kinds
- Lot 2. Original Design Quilt - All Kinds
- Lot 3. Special Occasion or Seasonal Quilts
 - Lot 3A. Bed Size Quilts
 - Lot 3B. Miniature Quilts
 - Lot 3C. Wall Hanging
 - Lot 3D. Table Runner
 - Lot 3E. Table Topper
 - Lot 3F. Tree Skirt
 - Lot 3G. Anniversary
 - Lot 3H. T-Shirt
 - Lot 3J. Other



\$5 prize for each "Best in Class" Quilt

Donated by Jeannette Freel of Triple F Quilting of Plattsmouth

Class G - MISCELLANEOUS QUILTS (Not included in any other category)

- Lot 1. Group/Friendship Quilts
Must give history and/or identify makers
- Lot 2. Group/Friendship Wall Hanging
Must give history and/or identify makers
- Lot 3. Quilted Table Runner
- Lot 4. Quilted Table Topper
- Lot 5. Rag Quilt
- Lot 6. Denim Quilt, any size
- Lot 7. Crazy Quilt
- Lot 8. Old Top/Newly Quilted
- Lot 9. Restored Old Quilt
Must give history and what was repaired. "Before" pictures must accompany exhibit.
- Lot 10. First Quilt
- Lot 11. Quilted Place Mat
- Lot 12. Unfinished quilt tops, (every quilter's dream)
 - Lot 12A. Crib Quilt—"The baby is in High School"
 - Lot 12B. Twin or Lap Quilt—"She's Married All ready"
 - Lot 12C. Full or larger—"I'm too tired!"



QUILT RAFFLE

Below is a picture of the Pastels quilt which was made from 2021's special quilt block contest. Raffle tickets available throughout the fair either at the fair office or near the kitchen area. Look in the Expo Center for the quilts on display along with raffle tickets to purchase.

Tickets are \$1 each or 6 for \$5.00. Need not be present to win. Drawing will be held at 8:00pm on Saturday night in the Expo Building.

Proceeds to be used for improvements to Open Class Departments.



PHOTOGRAPHY

See page 7 for prize values and judging process.

1. All entries must have been taken by the exhibitor between August 1, 2021 and August 1, 2022. NO ENTRIES BY PROFESSIONALS WILL BE ACCEPTED. A professional is deemed to be anyone who derives 50% or more of his income from the taking or processing of photographs, and/or is listed in any directory, but not limited to telephone directories and city directories, as a photographer or film processor.
2. Only prints that have not previously won a prize at the Cass County Fair are eligible. The superintendent reserves the right to refuse any entry deemed not suitable for the County Fair competition and to reclassify any entry incorrectly classified.
3. IMPORTANT: Each exhibitor is limited to a TOTAL of 6 entries. That means that even though there are more than six different possible classes and lots, the exhibitor is limited to a TOTAL of 6 entries. The special theme exhibit is exempt from this limit. Only 1 entry per class, per lot allowed within the limit of 6 entries. For Example, one person may not have 2 or more photos in Class 1, Lot 1A. He/She can have one in Class 1, Lot 1A, one in Class 1, Lot 1B, one in 1C, etc., but total entered can still only be 6.
4. The name and address of the exhibitor must be on the back side of the poster board or matting material.
5. Photo Size: Minimum: 3 1/2" x 5", Maximum: 8 x 10" total. Recommend 5x7" with mat not to exceed a total of 8x10 total dimensions. If photo is 8x10, then just mount but NO MAT. Must be securely & individually mounted on card stock, matting, or foam core. NO FRAMES ALLOWED. Self-adhesive photo paper does not stay on mounting during high humidity. Linen Mounting Tape or Double-faced Scotch Mounting Tape, available at photo supply stores is preferred. Photos falling apart from mounting will be removed from display.
6. Youth (16 and under) exhibitors are eligible in all classes and lots, but must indicate age to be considered as such. All others consider as adult.

Class 1 - COLOR PRINTS DIGITAL OR FILM

Class 2 - BLACK & WHITE PRINT DIGITAL OR FILM

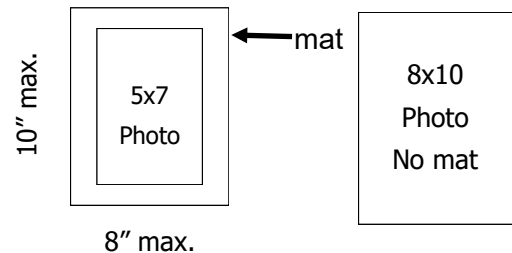
Class 3—MODIFIED IMAGE DIGITAL

LOTS APPLY TO ALL CLASSES

- | | | |
|-------------------------|--------------------------|----------------------|
| Lot 1. Wildlife | A. Animals | C. Insects |
| | B. Birds | D. Reptiles |
| Lot 2. Nature | A. Flowers | C. Sunsets |
| | B. Plants/foilage | D. Sunrises |
| Lot 3. Photojournalism | A. Occupations | C. Candid (unposed) |
| | B. Weather/Storm | D. Events |
| Lot 4. Scenic | A. Landscapes | C. Buildingscapes |
| | B. Waterscapes | D. Cityscapes |
| Lot 5. Still Life | A. Table top arrangement | D. Silhouettes |
| | B. Floral arrangement | E. Patterns/Textures |
| | C. Abstracts | |
| Lot 6. Architecture | A. Buildings | C. Monuments |
| | B. Bridges | D. Transportation |
| Lot 7. Action | | |
| Lot 8. Portrait - Posed | | |
| Lot 9. Nebraska Scene | | |
| Lot 10. Drone picture | | |

When entering a modified photo, please also enter the original before modification. The original can be the same size as the modified or smaller. Mount side by side.

Original Modified



Since our display space is limited, we must limit the size of photo entries. Total size limit is 8"x10". This can be a 5x7 with an 8x10 mat, or as large as 8x10 without any mat. Can be mounted flush on poster board, or foam core. Photos smaller than 5x7 are still acceptable. All photos should be mounted on something, such as poster board or construction paper. No photos fresh from the printing without some sort of mount will be accepted.

SPECIAL PHOTOGRAPHY EXHIBIT FOR 2021

Theme: "Country Fun for Everyone"

Must be 5" x 7" photograph, mounted on card stock, matting, or foam core.

Limit one entry per exhibitor, not part of limit of 6 in regular categories.

1st Place Rosette and \$10.00

2nd Place Rosette and \$ 7.00

3rd Place Rosette and \$ 5.00

Note: Plan for 2023 special photography theme of "Fun For the Whole Herd"

Open Class Textile and Fiber Arts Department

(formerly Needlework Department)

1. Entry article must have been made by the exhibitor him/herself, and entered under the maker's true name. If the superintendent has any doubt, he/she may determine the entering of the article.
2. Entry must not have been entered in the county competition in any previous year. If superintendent has any doubt, he/she may determine the entering of the article.
3. The superintendent shall determine if the entry is to be exhibited in the Textile Arts Department or another department.
4. All articles must have been completed within the last three (3) years.
5. Only one article per person per class/lot is permitted.
6. In case there is but a single entry in a class, the Judge shall determine the merit of a prize.
7. Management WILL NOT be responsible for any loss or damage that may occur to exhibits while on display. But the usual precautions for safety of all exhibits will be taken.
8. Management WILL NOT be responsible for articles not picked up within a reasonable amount of time after release time. It shall be the responsibility of each exhibitor to make every effort to pick up his/her articles at release time.
9. **No exhibit may leave before 10pm on Saturday evening. In such case, all premium earnings will be forfeited.**

PLEASE NOTE NEW INSTRUCTIONS FOR PLACING IN PROPER CLASS AND LOT

To enter your item, select the Class that matches your item, then the Lot that matches the technique you used. Example: If you enter a crocheted cap, choose Class 7A, Lot 9. **FOR YOUTH , INDICATE ACTUAL AGE ON TAG!!!**

LOTS:

- | | | | | |
|----------------------------|-------------------------|----------------------|-----------------------|---------------------|
| 1. Appliqué—Hand | 7. Cross Stitch by hand | 15. Felting | 24. Needlepoint | 33. Soft Sculpture |
| 2. Applique—Machine | 8. Crewel | 16. Hardanger | 25. Needle punch | 34. Stenciling |
| 3. Braiding | 9. Crochet | 17. Hooking | 26. Painting | 35. Stuffing |
| 4. Candle wicking | 10. Duplicate Stitch | 18. Knitting—Hand | 27. Patchwork | 36. Swedish Weaving |
| 5. Chicken Scratch | 11. Draping | 19. Knitting—Machine | 28. Plastic Canvas | 37. Tatting |
| 6. Counted Cross
Stitch | 12. Embroidery—Hand | 20. Lace Darning | 29. Quilting | 38. Tying |
| | 13. Embroidery-Machine | 21. Latch Hook | 30. Sewing by Hand | 39. Wrapping |
| | 14. Emb—Pulled Thread | 22. Long Stitch | 31. Sewing by Machine | 40. Yo-Yo |
| | | 23. Macrame | 32. Smocking | |

Class 1 - ACTIVE WEAR

- A. Exercise wear
- B. Play Clothes
- C. Sweatshirt
- D. T-shirt
- E. Swimwear

Class 2 - AFGHAN or BLANKET

- A. Regular Size
- B. Baby
- C. Lap

Class 3 - BASKET

Class 4 - BED COVER

Class 5 - CHILDREN'S ITEMS

- A. Bib
- B. Doll clothes
- C. Toy, made child safe
- D. Doll accessories

Class 6 - COAT OR JACKET

Class 7 - COLD WEATHER ACCESSORIES

- A. Hat, Cap, Headband, Ear warmer
- B. Mittens or Gloves
- C. Scarf
- D. Cowl or Infinity Scarf
- E. Stockings, Booties, Slippers or Socks
- F. Stole, Poncho, Cape, Shawl

Class 8 - COMBINATION ITEM

Item that is made using more than one technique. Example: an item that is sewn and also embellished with crocheted edging.

Class 9 - DOILY OR CENTERPIECE

Class 11 - DRESS OR SKIRT AND BLOUSE SET

Class 12 - EMBELLISHMENT ON Garment or other item

Class 13 - HOLIDAY ITEM

(for details on the Special Holiday Contest, see page 10)

Class 14 - HOUSEHOLD ACCESSORIES

- A. Pillow Case
- B. Dresser Scarf
- C. Bed Top Doll
- D. Bed Pillow or Bolster
- E. Door Stop
- F. Towel
- G. Window décor
- H. Rug
- I. Photo Album
- J. Picture Frame

Class 15 - FABRIC OR FIBER JEWELRY and/or HAIR ACCESSORIES

Class 16 - KITCHEN ITEMS

- A. Apron
- B. Dish Cloth
- C. Tea Towel
- D. Hot Dish Mat or Pot Holder
- E. Refrigerator Magnet

Class 17 - LINGERIE, LOUNGEWEAR, SLEEPWEAR

Class 18 - PICTURE OR SAMPLER FRAMED

- A. 5x7" or smaller
- B. Larger than 5x7" up to 8x10"
- C. Larger than 8x10"

Class 19 - PILLOW

Class 20 - PURSE

Class 21 - RE-PURPOSED ITEM

(Item made from another item. Example: a skirt made from a pair of jeans.)

Class 22 - SEPARATES

- A. Blouse or Shirt
- B. Jumper
- C. Overalls
- D. Slacks, Shorts, or Skirt
- E. Vest

Class 23 - SLEEPING BAG, TOTE BAG, WINDSOCK, OR MOBILE

Class 24 - SPECIAL OCCASION GARMENT

- A. Wedding Gown
- B. Bridesmaid Dress
- C. Prom Dress
- D. Baptism Gown
- E. Flower Girl Dress
- F. Other

Class 25 - SUIT

Class 26 - SWEATER

Class 27 - TABLECLOTH

Class 28 - TABLE ACCESSORIES

- A. Coasters
- B. Napkins
- C. Place Mat
- D. Table Runner
- E. Other item

Class 29 - WALL HANGING OR BELL PULL

Class 30 - ITEM NOT LISTED

CRAFTS - HANDWORK DEPARTMENT

CRAFTS—HANDWORK DEPARTMENT

Rules: **Limit of one entry per person per class and lot number.** Exhibitors 5 years old and younger receive participant ribbon. In case there is a single entry in a class/lot, the judge shall determine its worthiness of a prize. Age categories: Youth (6-16), Adult (17-and above) **YOUTH , INDICATE ACTUAL AGE ON ENTRY TAG.**
No exhibit may leave before 10pm on Saturday evening. In such case, all premium earnings will be forfeited.

NOTE: THIS CLASS HAS CHANGED AND NO LONGER INCLUDES ITEMS MADE FROM FABRIC OR FIBERS.
See page 7 for prize values and judging process.

Class 1 - BASKETRY

Lot 1. Any item

Class 2 - BEADS, BUTTONS, SEQUINS

Lot 1. Seasonal Item
Lot 2. Jewelry (any type)
Lot 3. Picture / Wall Hanging
Lot 4. Other Item not listed

Class 3 - CERAMICS

Lot 1. Glaze
Lot 2. Stain
Lot 3. Other item not listed

Class 4 - PUZZLES

(Must be ready to hang for display)

Lot 1. Jigsaw - Limit of 1000 pieces
Lot 2. 3-D Puzzles (must have sturdy base)

Class 5 - CALLIGRAPHY

Lot 1. Any Item

Class 6 - COPPER PUNCH /TIN CRAFT

Lot 1. Any Item

Class 7 - CRAFTS (ARTS)

Lot 1. Play-Doh Art
Lot 2. Foam Art
Lot 3. String Art
Lot 4. Wire Art
Lot 5. Clay Art
Lot 6. Mosaic Art
Lot 7. Other small art item not listed above.

Class 8 - WOOD BURNING

Lot 1. Any Item

Class 9 - CRAFTS (PAINTS) (Smaller type items)

Lot 1. Finger paint
Lot 2. Tie-dye
Lot 3. Other smaller paint item not listed above.

Class 10 - CRAFTS (Miscellaneous and others)

Lot 1. Collage
Lot 2. Collections (at least 12 items)
Lot 3. Hand-woven items (hot pads, mats, etc.)
Lot 4. Decoupage
Lot 5. Any other kind not listed above.

Class 11 - FLOWERS

Lot 1. Dried arrangements / Bouquet
Lot 2. Silk arrangements / Bouquet
Lot 3. Silk corsage
Lot 4. Other item not listed above

Class 12 - GLASS (Blown, Cooked, Stained, or Painted)

Lot 1. Box, Container, or Vase
Lot 2. Holiday Item
Lot 3. Sun catcher
Lot 4. Other item not listed above

Class 13 - HOLIDAY CRAFTS

Lot 1. Only for items not listed under other classes or lot numbers

Class 14 - MOBILES

Lot 1. Any kind

Class 15 - MODELS

Lot 1. Car/Truck/Tractor/Train Car
Lot 2. Diorama
Lot 3. Other item not listed above

Class 16 - RE-FORMING OF FURNITURE

Lot 1. Refinished Item
Lot 2. Other item not listed above

Class 17 - NATURE

(ARTICLES MADE WITH THE FOLLOWING:)

Lot 1. Collage of nature items
Lot 2. Seeds
Lot 3. Sea Shells
Lot 4. Dried Vegetables (bird houses, etc.)
Lot 5. Other Item Not listed above

Class 18 - PAPER

Lot 1. Greeting Cards
Lot 2. Any kind of paper cutting
Lot 3. Folded paper items
Lot 4. Other item not listed above

Class 19 - STEPPING STONES

Lot 1. Any item

Class 20 - RECYCLED ITEMS

Lot 1. Cardboard or Paper
Lot 2. Glass Jars or Jugs
Lot 3. Plastic bottles or Jugs
Lot 4. Pop or Tin Cans
Lot 5. Other item not listed above

Class 21 - HISTORICAL

Lot 1. Display

Class 22 - STENCILING

Lot 1. Any item

Class 23 - WREATHS

Lot 1. Holiday
Lot 2. Item not listed above

Class 24 - CARPENTRY

Lot 1. Bird house or Butterfly house
Lot 2. Bird Feeder
Lot 3. Flower box or stand
Lot 4. Pull-type Toy
Lot 5. Picture frame or book cover
Lot 6. Ornament
Lot 7. Game table or Game Board
Lot 8. Coat Rack or Hall Tree
Lot 9. Clock (any size or type)
Lot 10. Shelves (any type or size)
Lot 11. Quilt Rack
Lot 12. Any Holiday decoration
Lot 13. Doll House (with or without furniture)
Lot 14. Coffee table/ End table
Lot 15. Chest
Lot 16. Other item not listed above

Class 25. WAX ARTICLES

Lot 1. Candles
Lot 2. Other item not listed above

Class 26 - SCRAPBOOKING PAGE PAGE ONLY, NOT A BOOK!

Lot 1. Family Page
Lot 2. Travel Page
Lot 3. Sport Page
Lot 4. Holiday Page
Lot 5. Memorable Event Page (wedding, Baptism, Birthday, etc.)
Lot 6. Heritage Page
Lot 7. Other page not listed above

Class 27 - DUCK TAPE ITEMS

Lot 1. Any Item

Class 28 - JEWELRY

Lot 1. Any Item

LEGOS & K-NEX ENTRIES ARE ENTERED AND DISPLAYED IN THE COMMERCIAL BUILDING (East of Expo Center. Note change of place) All times and other rules apply.

Class 29 - K-NEX

Lot 1. Small item (limit 12" tall)
Lot 2. Large item (12" tall & up to 20" tall)

Class 30 - LEGOS

ALL LEGO DISPLAYS TO BE ON A STIFF SURFACE, NOT TO EXTEND MORE THAN ONE INCH AROUND THE ITEM. NO ITEM TO BE LARGER THAN 18"X18"X18". (LENGTH, WIDTH, HEIGHT).

If not on a stiff surface, item will be judged down a level.

Lot 1. A Scene
Lot 2. Your own creation
Lot 3. From a Kit

FINE ARTS DEPARTMENT

The management will NOT be responsible for any loss or damage that may occur to exhibits while on display, but the usual precautions for safety of exhibits will be taken.. Entry must have been completed in the last 3 years.

1. All entries must be the work of the exhibitor. **ALL ENTRIES MEANT TO BE HUNG MUST BE MOUNTED FOR HANGING.** either framed or mounted on heavy card stock or pre-cut mat, **WITH HANGING HOOK TO HANG ON NAIL OR PEGBOARD HOOK.** **If item is to be hung but is entered without hanging hardware, tab, etc., item will be judged down one level.** Fragile surfaces should be glassed or otherwise protected.
2. The superintendent reserves the right to refuse any entry deemed not suitable for County Fair competition and to reclassify an entry not correctly entered.
3. Youth (ages 6-16) exhibitors are eligible in all classes and lots, but **MUST** indicate age bracket to be considered as such. **INDICATE AGE BRACKET** on entry tag. **For Youth, indicate actual age.**
4. **NO WET PAINT**
5. **No exhibit may leave before 10pm on Saturday evening. In such case, all premium earnings will be forfeited.**

See page 7 for prize values and judging process.

NEW RULES: Limit of 4 entries per person, per Class. For Example, one artist may enter up to 4 watercolor items, 4 pencil sketches, 4 sculpture items, etc. Not limited to 1 of a certain subject matter or lot, as in the past.

Class 1 - WATERCOLOR

Class 2 - OIL

Class 3 - ACRYLIC

Class 4 - PENCIL SKETCHES

Class 5 - PEN & INK SKETCHES

Class 6 - GLASS WORK

Class 7 - MISCELLANEOUS PICTURES

Class 8 - SCULPTURE

Class 9 - ORIGINAL FABRIC OR FIBER ART
(done without a pattern)

Class 10- POTTERY (CLAY)

Class 11 - LATHE PROJECTS

Class 12 - LEATHER

Class 13 - WOOD CARVING

Class 14 - ETCHING

Class 15 - CHINA PAINTING

Class 16 - SEASONS

Class 17 - DIGITAL ART

Class 18 - SPRAY PAINT

Class 19- GRAFITI

Class 20 - ABSTRACT ART

Class 21- JEWELRY

Class 22 - MISCELLANEOUS

YOUTH DIVISION (6-16 years)

Use all above categories and **indicate actual age**

FOOD PRESERVATION DEPARTMENT

Entry day is Sunday, August 7, 2022 4-6pm

No person may enter more than one article in any one lot number. In case there is but a single entry in a class/lot, the judge shall determine the merit of a prize. All canned food may be opened. Jellies will be opened and cut to show consistency. Recommended processing methods must be followed for all food preservation. Jams, preserves and marmalades, fruit, tomatoes and pickled vegetables must be processed in a boiling water bath. All non-acid vegetables and meats must be processed in a pressure canner. Spoilage disqualifies entry. No antique jars will be accepted. All Canning entries must have been processed since last County Fair. ALL CANNING ENTRIES MUST BE IN PROPER CANNING JARS, NOT OLD MAYONNAISE-TYPE JARS.

No exhibit may leave before 10pm on Saturday evening. In such case, all premium earnings will be forfeited.

See page 7 for prize values and judging process.

Class 1 - FRUIT (QT OR PT JARS)

- Lot 1. Apples (sliced, etc.)
- Lot 2. Applesauce
- Lot 3. Apricots (whole or half)
- Lot 4. Cherries (Bing, Sour, or Sweet)
- Lot 5. Grapes
- Lot 6. Peaches (Whole, Halved, or Sliced)
- Lot 7. Pears (Halved or Sliced)
- Lot 8. Plums (Blue or Red)
- Lot 9. Rhubarb
- Lot 10. Any other fruit not named

Class 2 - BERRIES (QT OR PT JARS)

- Lot 1. Gooseberries
- Lot 2. Mulberries
- Lot 3. Raspberries (red or black)
- Lot 4. Strawberries
- Lot 5. Other berries

Class 3 - VEGETABLES (QT OR PT)

- Lot 1. Asparagus
- Lot 2. Beans (green or wax)
- Lot 3. Beets
- Lot 4. Cabbage
- Lot 5. Carrots (whole or sliced)
- Lot 6. Corn (whole kernel or creamed)
- Lot 7. Okra
- Lot 8. Onions
- Lot 9. Peas
- Lot 10. Potatoes (white or sweet)
- Lot 11. Pumpkin
- Lot 12. Sauerkraut
- Lot 13. Spinach (other greens)
- Lot 14. Squash
- Lot 15. Tomatoes (State method used)
- Lot 16. Vegetables (mixed)
- Lot 17. Any other vegetable
- Lot 18. Juices
 - Lot 18A. Tomato
 - Lot 18B. Other
- Lot 19. Stewed Tomatoes

Class 4 - MEATS

- Lot 1. Beef
- Lot 2. Pork
- Lot 3. Chicken
- Lot 4. Deer
- Lot 5. Other

Class 5 - SYRUPS

- Lot 1. Any fruit syrup

Class 6 - WINES

- Lot 1. Grape
- Lot 2. Fruit
- Lot 3. Berry
- Lot 4. Specialty



Class 7 - PICKLED VEGETABLES

- Lot 1. Beans (string or wax)
- Lot 2. Beets (whole or sliced)
- Lot 3. Bread and butter
- Lot 4. A. Dill cucumber whole
B. Dill cucumber slices
- Lot 5. Mix pickles (sweet or sour)
- Lot 6. Onion (small)
- Lot 7. Peppers (sweet or hot)
- Lot 8. Sweet cucumber (chunk, lime, or ripe)
- Lot 9. Carrots
- Lot 10. Zucchini
- Lot 11. Corn
- Lot 12. Peas
- Lot 13. Any other pickled vegetables

Class 8 - PICKLED FRUITS

- Lot 1. Crabapple
- Lot 2. Peach
- Lot 3. Pear
- Lot 4. Watermelon
- Lot 5. Any other pickled fruit

Class 9 - RELISHES AND SAUCES

- Lot 1. Beets
- Lot 2. Chili Sauce
- Lot 3. Chow-chow
- Lot 4. Corn
- Lot 5. Cucumber (sweet)
- Lot 6. Mustard
- Lot 7. Ketchup
- Lot 8. Pepper (red, green, hot, sweet)
- Lot 9. Piccalilli
- Lot 10. Salsa
- Lot 11. Spaghetti Sauce (no meat)
- Lot 12. Taco sauce
- Lot 13. Zucchini
- Lot 14. Any other sauce

Class 10 - Canned Soups

- Lot 1. Tomato
- Lot 2. Chicken/Turkey
- Lot 3. Any Cream Soup
- Lot 4. Vegetable

Class 11 - Dry Soup Mix

- Lot 1. Any Dry Soup Mix in a jar
(Include 3x5 card with ingredients and directions)

Class 12 - PRESERVES AND JAMS

MADE WITH SMALL FRUIT PIECES OR CRUSHED FRUIT

- Lot 1. Apple
- Lot 2. Cherry
- Lot 3. Grape
- Lot 4. Peach
- Lot 5. Pear
- Lot 6. Pineapple
- Lot 7. Strawberry
- Lot 8. Plum (tame or wild) (See special contest for Plum JAM) pg. 8
- Lot 9. Rhubarb (plain or mixed)
- Lot 10. Raspberry (red or black)
- Lot 11. Tomato (red or yellow)
- Lot 12. Any other preserve or jam

Class 13 - BUTTERS

SIEVED FRUIT WITH SUGAR ADDED AND COOKED UNTIL THICK

- Lot 1. Apple
- Lot 2. Apricot
- Lot 3. Grape (tame or wild)
- Lot 4. Peach
- Lot 5. Pear
- Lot 6. Plum (tame or wild)
- Lot 7. Any other butter

Class 14 - JELLIES JUICE OF FRUIT, BOILED IN SUGAR

- Lot 1. Apple
- Lot 2. Crabapple
- Lot 3. Cherry
- Lot 4. Chokecherry
- Lot 5. Grape (tame or wild)
- Lot 6. Plum (tame or wild)
- Lot 7. Raspberry (red or black)
- Lot 8. Gooseberry
- Lot 9. Strawberry
- Lot 10. Any other Jelly

Class 15 - DRIED OR DEHYDRATED

DRYING OUT THE NATURAL MOISTURE IN ALL FRUIT, VEGETABLES AND MEATS

- Lot 1. Fruits or fruit leathers (identify)
- Lot 2. Herbs (identify)
- Lot 3. Meat jerkies (identify)
- Lot 4. Vegetables (identify)

Class 16 - BEER

- Lot 1. Any beer

Class 17 - PIE FILLINGS

- Lot 1. Fruit
- Lot 2. Meat
- Lot 3. Other

FOODS DEPARTMENT

All entries **MUST** be the work of the exhibitor

Entry day is Tuesday, August 9, 2022 8-10am
See page 7 for prize values and judging process.

FYI - Foods may be entered on Sunday afternoon 4-6pm, BUT they won't be judged until Tuesday!

BREADS AND SWEET DOUGH MADE WITH YEAST (unless otherwise noted) **HAND KNEAD OR BREAD MACHINE:** Breads should be baked in individual bread pans. All entries must be made by the work of the exhibitor. Breads should be twenty-four (24) hours old when judged. **Enter 2/3 of a loaf of bread or 2/3 of a cake. Please include recipe on 3x5 card.**

No exhibit may leave before 10pm on Saturday evening. In such case, all premium earnings will be forfeited.

All Items should be made "from scratch" unless Class or Lot instructions request otherwise.

Please label your entry, i.e. "Blueberry Coconut Bread" or "Pumpkin Fudge".

Class 1 - YEAST BREADS AND ROLLS (Identify method used)

- Lot 1. White bread (bring 2/3 loaf)
- Lot 2. Whole grain bread (bring 2/3 loaf)
- Lot 3. Raisin bread (bring 2/3 loaf)
- Lot 4. Rye bread (bring 2/3 loaf)
- Lot 5. Buns or pan rolls (3 to a plate)
- Lot 6. Dinner rolls (3 to a plate)
 cloverleaf, horns, parker house, etc.)
- Lot 7. Frozen bread dough (state if used)
- Lot 8. Bread Sticks (3 to a plate)
- Lot 9. Other yeast breads or rolls not listed above
- Lot 10. Savory Bread (bring 2/3 loaf)

Class 2 - SWEET DOUGH (Identify method used)

- Lot 1. Cinnamon rolls (3 to a plate)
 Nuts or frosting optional
- Lot 2. Yeast coffee cake or tea ring
- Lot 3. Kolaches (3 to a plate)
- Lot 4. Raised donuts (3 to a plate)
- Lot 5. Frozen sweet dough (state if used)
- Lot 6. Any other sweet roll

Class 3 - BREAD MACHINE

- Lot 1. White (bring 2/3 loaf)
- Lot 2. Wheat (bring 2/3 loaf)
- Lot 3. Rye (bring 2/3 loaf)
- Lot 4. Rolls, sweet or dinner) 3 to a plate
- Lot 5. Any other bread machine item not listed above

Class 4 - QUICK BREADS (not raised)

- Lot 1. Donut (3 to a plate)
- Lot 2. Fruit breads (banana, cranberry, etc.)
- Lot 3. Gingerbread
- Lot 4. Vegetable breads (carrot, zucchini, etc.)
- Lot 5. Coffee Cake
 (with or without topping)
- Lot 6. Baking powder biscuits
 (3 to a plate)
- Lot 7. Muffins (3 to a plate)
- Lot 8. Scones (3 to a plate)
- Lot 9. Any other quick breads not listed above

Class 5 - Pastries

- Lot 1. Any item

Class 6 - CAKES w/SHORTENING (unfrosted/no icing) ANY SIZE OR TYPE OF PAN.

- Lot 1. Apple (applesauce)
- Lot 2. Carrot
- Lot 3. Devil's Food (chocolate)
- Lot 4. Sunshine (yellow or gold)
- Lot 5. Pound cake (not layered)
- Lot 6. Fruit upside down cake
- Lot 7. Spice cake
- Lot 8. White cake
- Lot 9. Box cake mixes
- Lot 10. Cupcakes
- Lot 11. Other cakes with shortening not listed above

Class 7 - CAKES MADE WITH EGGS unfrosted/no icing (NO SHORTENING)

- Lot 1. Angel Food (white or chocolate)
- Lot 2. Chiffon
- Lot 3. Jelly Roll
- Lot 4. Sponge
- Lot 5. Any other egg cake not listed above

Class 8 - FROSTED / ICED ITEMS

- Lot 1. German Chocolate Cake
- Lot 2. Brownie (any type)
- Lot 3. Cookie (any type)
- Lot 4. Any other frosted/iced item not listed above

Any frosting used for decoration should be of a cooked variety.

FOODS DEPARTMENT

Entry day is Tuesday, August 9, 2022 8-10am
See page 7 for prize values and judging process.

COOKIES

Cookies must be on a paper plate, enclosed in a plastic bag. Each variety must consist of 3 cookies.

Class 9 - DROP COOKIES

DOUGH IS DROPPED BY TEASPOON ONTO COOKIE SHEET

- Lot 1. Chocolate chip
- Lot 2. Macaroon
- Lot 3. Oatmeal (nut and/or raisins optional)
- Lot 4. Peanut butter
- Lot 5. Sour cream
- Lot 6. Made from cake mix
- Lot 7. Drop cookies not listed above (frosted or unfrosted)
- Lot 8. Chocolate

Class 10 - BAR COOKIES

DOUGH IS SPREAD IN PAN, BAKED AND CUT

- Lot 1. Butterscotch
- Lot 2. Brownies (no frosting)
- Lot 3. Layered bar cookies (no frosting) (nuts or fruit optional)
- Lot 4. Lemon bars
- Lot 5. Pumpkin or Zucchini (identify)
- Lot 6. Bar cookies not listed above (identify)

Class 11 - REFRIGERATOR OR ROLLED COOKIES

DOUGH MUST BE CHILLED THEN CUT, ROLLED OR FORMED INTO SHAPES.

- Lot 1. Gingerbread, decorated
- Lot 2. Pinwheel
- Lot 3. Refrigerator (sliced)
- Lot 4. Sugar (rolled)
- Lot 5. Refrigerator or rolled cookies not listed above
- Lot 6. Chocolate

Class 12 - MOLDED COOKIES

FORMED INTO DESIRED SHAPES WITH HANDS OR A COOKIE PRESS

- Lot 1. Coconut
- Lot 2. Filled Cookies
- Lot 3. Gingersnaps
- Lot 4. Molasses
- Lot 5. Peanut Butter
- Lot 6. Snicker Doodle
- Lot 7. Spritz
- Lot 8. Sugar (not rolled)
- Lot 9. Thumbprint (filled with jelly or frosting)
- Lot 10. Molded or pressed cookies not listed above.

CANDY

Candy must be on paper plate, enclosed in a plastic bag. Each variety must consist of six (6) pieces.

Class 13 - CANDY

- Lot 1. Caramel
- Lot 2. Covered (cream center, cherries, etc.)
- Lot 3. Divinity
- Lot 4. Fondant
- Lot 5. Fudge (chocolate or peanut butter)
- Lot 6. Hard candy (lollipop, etc.)
- Lot 7. Mints (cream cheese or chocolate)
- Lot 8. Peanut Brittle
- Lot 9. Penuche
- Lot 10. Praline
- Lot 11. Taffy
- Lot 12. Toffee
- Lot 13. Assorted (4 different varieties)



FLOWERS AND PLANTS DEPARTMENT

Trisha Schliefert, Superintendent, 402-234-5074

Entry is Tuesday, August 9th, 2022 from 8am to 10am



- Rules:**
1. All flowers are to be grown and picked from your own flower garden or yard.
 2. No commercially grown flowers allowed.
 3. No type of commercial flower arrangements, collections, or potted plants allowed.
 4. Entry should consist of 3 stems unless otherwise indicated.
 5. Furnish your own container. Management does not furnish containers/vases.
 6. Management NOT responsible for containers or accessories.

Points considered by Judges: No leaves under water line, leave some foliage on flower stems, stems should be same length, uniformity in size, uniformity in color, free of insect damage, free of disease and mildew, quality of flower, size of flower, and age of flower.

See page 7 for prize values and judging process.

Class 1A - ANNUALS

- Lot 1. Amaranthus (1 stem)
- Lot 2. Ageratum
- Lot 3. Aster
- Lot 4. Balsam
- Lot 5. Begonia (fibrous)
- Lot 6. Bells of Ireland
- Lot 7. Cabbage-ornamental (1 stem)
- Lot 8. Calendula
- Lot 9. California poppy
- Lot 10. Carnation
- Lot 11. Celosia (1 stem)
 - 11A. Plumed
 - 11B. Cockscomb
- Lot 12. Cosmos
- Lot 13. Dianthus
- Lot 14. Geranium
- Lot 15. Gomphrena
- Lot 16. Gynophilic (baby's breath)

Class 1B - ANNUALS

- Lot 1. Impatiens, single
- Lot 2. Impatiens, double
- Lot 3. Lisianthus
- Lot 4. Marigold, large (3 blooms)
- Lot 5. Marigold, small (6 blooms)
- Lot 6. Pansy
- Lot 7. Petunia, double
- Lot 8. Petunia, single
- Lot 9. Phlox
- Lot 10. Salvia
- Lot 11. Snapdragon
- Lot 12. Statice
- Lot 13. Strawflower
- Lot 14. Sweet Pea

Class 1C - ANNUALS

- Lot 1. Verbena
- Lot 2. Vinca
- Lot 3. Zinnia, shag
- Lot 4. Zinnia, large
- Lot 5. Zinnia, small
- Lot 6. Nicotiana
- Lot 7. Hollyhock
- Lot 8. Viola
- Lot 9. Other Annuals

Class 2 - PERENNIALS

- Lot 1. Aster
- Lot 2. Chrysanthemum
- Lot 3. Coreopsis
- Lot 4. Daisy
- Lot 5. Delphinium
- Lot 6. Gloriosa Daisy
- Lot 7. Gyposiphilia (baby's breath)
- Lot 8. Lily (1 stem)
 - 8A. Hybrid
 - 8B. Surprise
 - 8C. Day
- Lot 9. Salvia
- Lot 10. Statice
- Lot 11. Sweet Pea
- Lot 12. Veronica
- Lot 13. Russian Sage
- Lot 14. Other Perennials

Class 3 - BULBS

- Lot 1. Begonia (tuberous)
- Lot 2. Canna (1 stem)
- Lot 3. Dahlia, large (1 bloom)
- Lot 4. Dahlia, small (3 blooms)
- Lot 5. Gladiola (1 stalk)
 - 5a. Red
 - 5b. White
 - 5c. Yellow
 - 5d. Purple
 - 5e. Orange
 - 5f. Pink
- Lot 6. Tuberose
- Lot 7. Allium
- Lot 8. Other Bulbs

Class 4 - FLOWERING BUSHES (1 STEM)

- Lot 1. Butterfly Bush
- Lot 2. Hibiscus, single
- Lot 3. Hibiscus, double
- Lot 4. Hydrangea
- Lot 5. Rose of Sharon, single
- Lot 6. Rose of Sharon, double
- Lot 7. Other bushes

Class 5 - ROSES (1 STEM)

- Lot 1. Hybrid tea rose
- Lot 2. Floribunda rose
- Lot 3. Climbing rose
- Lot 4. Shrub rose
- Lot 5. Other roses

Class 6A - WILDFLOWERS (CULTIVATED)

- Lot 1. Achillea-yarrow
- Lot 2. Beardtongue
- Lot 3. Butter and Eggs
- Lot 4. Cleome
- Lot 5. Coneflower
- Lot 6. Cornflower (bachelor button)
- Lot 7. Daisy
- Lot 8. Flax
- Lot 9. Forget-me-not
- Lot 10. Foxglove

Class 6B - WILDFLOWERS (CULTIVATED)

- Lot 1. Gaillardia
- Lot 2. Larkspur
- Lot 3. Latria
- Lot 4. Lupine
- Lot 5. Phlox
- Lot 6. Pincushion
- Lot 7. Rudbeckia-Black Eyed Susan
- Lot 8. Butterfly Weed
- Lot 9. Other wildflowers

Class 7 - HERBS

- Lot 1. Artemisias
- Lot 2. Basil
- Lot 3. Red-Purple Basil
- Lot 4. Bee balm
- Lot 5. Chives
- Lot 6. Cilantro
- Lot 7. Dill
- Lot 8. Feverfew
- Lot 9. Lamb's Ear
- Lot 10. Lavender
- Lot 11. Lovage
- Lot 12. Marjoram
- Lot 13. Mint
- Lot 14. Nasturtium
- Lot 15. Oregano
- Lot 16. Parsley
- Lot 17. Rosemary
- Lot 18. Sage
- Lot 19. Thyme
- Lot 20. Other Herbs

Class 8 - VINES

- Lot 1. Trumpet
- Lot 2. Honeysuckle
- Lot 3. Other Vines

Class 9 - GRASSES

- Lot 1. Pampas
- Lot 2. Zebra-striped
- Lot 3. Quaking
- Lot 4. Purple Fountain (annual)
- Lot 5. Other grasses

Class 10 - COLLECTIONS

- Lot 1. Annuals, 1 each of 5 varieties
- Lot 2. Perennials, 1 each of 5 varieties
- Lot 3. Cultivated Wildflowers, 1 each of 5 varieties
- Lot 4. Grasses (1 each of 5)
- Lot 5. Foliage (1 each of 5)

Class 11 - ARRANGEMENT Committee not responsible for containers or accessories.

- Lot 1. Floral miniature Design under 8" overall
- Lot 2. Special occasion— Birthday, graduation, Holiday, etc.
- Lot 3. Summer Flower Arrangement
- Lot 4. Arrangement with foliage predominate.
- Lot 5. Interpretation of County Fair Theme

Class 12 - FOLIAGE STEMS

- Lot 1. Caladium
- Lot 2. Canna (1 stem)
- Lot 3. Coleus
- Lot 4. Elephant Ear - Under 12" 3 stems Over 12" - 1 stem
- Lot 5. Fern
- Lot 6. Hosta
- Lot 7. Lamium
- Lot 8. Other

Class 13 - POTTED PLANTS

- Lot 1. Indoor Plants
- Lot 2. Outdoor Plants
- Lot 3. Succulent Plants
- Lot 4. Bucket Garden

Class 14 - YOUTH DIVISION (6-16 years)

Class 15 - PARTICIPANTS (5 years and younger)



AGRICULTURE DEPARTMENT

Enter products on Tuesday morning, 8-10:00am

Exhibits should be selected for type, uniformity, quality, and maturity. Do not select the large over-grown specimens nor the small, but those suitable for marketing purposes. The following rules will govern the exhibits:

1. All exhibits must be raised by the exhibitor.
2. All lots one exhibit per class/lot per exhibitor.
3. Entries shown in collective exhibits from local townships and farm exhibits can also compete for individual premiums but must be so entered.
4. All exhibits must be true to entry as to variety and classification, or otherwise they must be so changed by the judge and superintendent.
5. This class is open to Cass County products only.
6. Seed and plants maturing later than Fair Week may be exhibited from last year's crop.
7. All fruit must be properly named in order to compete for the premiums.
8. All specimens shall be in their natural state and be free from worm and insect injuries.
9. No longer need to supply a paper plate for your entry. Appropriate sized plastic baskets will be provided.

Consult the Guide, 4-H 226 Selecting and Preparing Vegetables, Herbs and Fruits and Exhibit, available at Extension Office.

***Note: the number of vegetables in exhibit may be different in open class than in 4-H

See page 7 for prize values and judging process.

EGGS

This was a new agriculture product for Open Class judging in 2018. It is still available as Class 33. See page 25

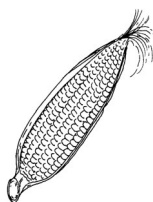
Class 1 - THRESHED GRAINS AND SEEDS, 1 PINT

- Lot 1. Hard Winter Wheat
- Lot 2. Milo
- Lot 3. Alfalfa
- Lot 4. Bluegrass
- Lot 5. Brome Grass
- Lot 6. Red Clover
- Lot 7. Reed Canary Grass
- Lot 8. Oats
- Lot 9. Soybeans
- Lot 10. Sudan Grass
- Lot 11. Sweet Clover
- Lot 12. Timothy Grass
- Lot 13. Wheat Grass
- Lot 14. Other grasses



Class 2 - CORN (This summer's growth. Entry consists of 4 husked ears.)

- Lot 1. Regular size Indian Corn
- Lot 2. Miniature Indian Corn
- Lot 3. Yellow Sweet Corn
- Lot 4. White Sweet Corn
- Lot 5. Yellow Popcorn
- Lot 6. White Popcorn
- Lot 7. Yellow Field Corn
- Lot 8. White Field Corn
- Lot 9. Bi-color sweet corn



Class 2A - FIELD CORN (Single Ear)

1st, 2nd, and 3rd Place Ribbons

Largest and best single ear, any variety, to be judged 50% for size and 50% for quality. Each ear must be over 9 inches long.

Class 3 - SHEAF DISPLAY

Sheaf grains and tame grasses should not be less than three (3) inches in diameter at the middle band. Sheaves of wild grasses should not be less than one inch at the center band. Forage stalks should retain their foliage, but small grain sheaves should be stripped of leaves. Sheaves of sorghum should not be stripped of leaves.

- Lot 1. Alfalfa
- Lot 2. Barley
- Lot 3. Bluegrass
- Lot 4. Brome Grass
- Lot 5. Crested Wheat Grass
- Lot 6. Forage Sorghum
- Lot 7. Milo
- Lot 8. Oats
- Lot 9. Red Clover
- Lot 10. Reed Canary Grass
- Lot 11. Rye
- Lot 12. Soybeans
- Lot 13. Sudan Grass
- Lot 14. Western Wheat Grass
- Lot 15. Wheat
- Lot 16. White Sweet Clover
- Lot 17. Wild Grasses (hay)
- Lot 18. Yellow Sweet Clover
- Lot 19. Other Grasses



Class 3A - GRASS COLLECTIONS

- Lot 1. Collection of 4 tame grasses
- Lot 2. Collection of 4 wild grasses

Class 4 - STALK DISPLAY - Entry is 4 stalks with foliage. Ears of corn should be husked back for display.

- Lot 1. Regular size Indian Corn
- Lot 2. Miniature Indian Corn
- Lot 3. Yellow Sweet Corn
- Lot 4. White Sweet Corn
- Lot 5. Yellow Popcorn
- Lot 6. White Popcorn
- Lot 7. Yellow Field Corn
- Lot 8. White Field Corn
- Lot 9. Grain Sorghum (milo)



Class 4A ONE STALK PER SAMPLE

- Lot 1. Tallest stalk of corn (cut at ground level)
- Lot 2. Stalk of corn with most ears
- Lot 3. Grain sorghum (milo), best 4 heads.

AGRICULTURE DEPARTMENT, continued



Class 5 - POD VEGETABLES

- Lot 1. Beans, green (6)
- Lot 2. Beans, lima (6)
- Lot 3. Beans, yellow (6)
- Lot 4. Black-eyed Peas (6)
- Lot 5. Okra (4)
- Lot 6. Peas (6 pods)



Class 12 - CUCUMBERS

- Lot 1. Cucumbers, pickling (5)
- Lot 2. Cucumbers, slicing (2)
- Lot 3. Cucumbers, seed (2)



CLASS 6 - ROOT VEGETABLES & TUBERS

- Lot 1. Beets, table (3)
- Lot 2. Radishes (3)
- Lot 3. Carrots (3)
- Lot 4. Turnips (3)
- Lot 5. Parsnips (3)
- Lot 6. Sweet Potatoes (3)
- Lot 7. Potatoes, white (3)
- Lot 8. Potatoes, red (3)

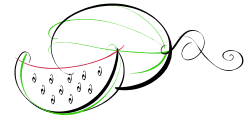


Class 13 - GOURDS

- Lot 1. Gourds (4)
- Lot 2. Gourds, Birdhouses (1)
- Lot 3. Green Gourd (1)

CLASS 14 - MELONS

- Lot 1. Muskmelon (1)
- Lot 2. Watermelon (1)
- Lot 3. Honeydew (1)



CLASS 7 - CRUCIFER VEGETABLES

- Lot 1. Broccoli (2)
- Lot 2. Brussel sprouts (5)
- Lot 3. Cabbage, green (1)
- Lot 4. Cabbage, red (1)
- Lot 5. Cauliflower (1)
- Lot 6. Kohlrabi (3)



CLASS 15 - PUMPKINS & SQUASH

- Lot 1. Pumpkin, miniature (2)
- Lot 2. Pumpkin, cow (1)
- Lot 3. Pumpkin, pie (1)
- Lot 4. Pumpkin, white (1)
- Lot 4a. Pumpkin, any other type (1)
- Lot 5. Squash, acorn (1)
- Lot 6. Squash, crookneck (1)
- Lot 7. Squash, cashew (1)
- Lot 8. Squash, butternut (1)
- Lot 9. Squash, summer green (1)
- Lot 10. Squash, summer white (1)
- Lot 11. Squash, summer yellow (1)
- Lot 13. Squash, turban (1)
- Lot 14. Squash, spaghetti (1)
- Lot 15. Squash, Sioux Winter (2)
- Lot 16. Zucchini (2)
- Lot 17. Any other pumpkin not listed above



CLASS 8 - BULB VEGETABLES

- Lot 1. Onions, green (3)
- Lot 2. Onions, red (3)
- Lot 3. Onions, white (3)
- Lot 4. Onions, white Bermuda (3)
- Lot 5. Onions, yellow (3)
- Lot 6. Onions, yellow Bermuda (3)
- Lot 7. Onions, yellow Sweet Spanish (3)
- Lot 8. Onion Sets, red (6)
- Lot 9. Onion Sets, white (6)
- Lot 10. Onion Sets, Yellow (6)
- Lot 11. Garlic (1 bulb)



CLASS 16 - SUMMER APPLES - (3 per entry)

- Lot 1. Lodi
- Lot 2. Duchess
- Lot 3. Wealthy
- Lot 4. Early Gold

CLASS 9 - STALK OR STEM VEGETABLES

- Lot 1. Parsley stems (5)
- Lot 2. Celery (1 bunch)

CLASS 10 - PEPPERS & EGGPLANT

- Lot 1. Peppers, hot (4)
- Lot 2. Peppers, sweet green (Bell) (4)
- Lot 3. Peppers, sweet green (not Bell) (4)
- Lot 4. Peppers, sweet red (4)
- Lot 5. Peppers, sweet yellow (4)
- Lot 6. Peppers, any other sweet (4)
- Lot 7. Peppers, hot chili (4)
- Lot 8. Peppers, hot banana (4)
- Lot 9. Peppers, hot Jalapeno (4)
- Lot 10. Peppers, Any other hot (4)
- Lot 11. Eggplant (2)



CLASS 17 - WINTER & FALL APPLES (3 per entry)

- Lot 1. Cortland
- Lot 2. Grimes Golden
- Lot 3. Jonathan (See special contest for Jonathan) pg. 11
- Lot 4. King David
- Lot 5. McIntosh
- Lot 6. Gala
- Lot 7. Jonagold
- Lot 8. Rome
- Lot 9. Red Delicious
- Lot 10. Winesap
- Lot 11. Golden Delicious
- Lot 12. Granny Smith



CLASS 11 - TOMATOES

- Lot 1. Tomatoes, Red Cherry (12)
1 1/2 inches or less in diameter
- Lot 2. Tomatoes, Red Patio (6)
1 1/2-2 inches in diameter
- Lot 3. Tomatoes, red canning (Roma type) (4)
- Lot 4. Tomatoes, red slicing (4)
2 1/2 inches or more in diameter
- Lot 5. Tomatoes, Yellow (4)
- Lot 6. Tomatoes, Yellow pear (12)
- Lot 7. Tomatoes, Yellow cherry (12)
- Lot 8. Tomatoes, Grape (12)
- Lot 9. Tomatoes, any other type (4)



CLASS 18 - FLOWERING CRAB (10 APPLES)

- Lot 1. Dolgo
- Lot 2. Mauchierion
- Lot 3. Whitney



CLASS 19 - PEARS (3 per entry)

- Lot 1. Bartlett
- Lot 2. Anjou
- Lot 3. Spartlett
- Lot 4. Duchess
- Lot 5. Kieffer

AGRICULTURE DEPARTMENT, continued

Class 20- PLUMS (5 per entry)

- Lot 1. Stanley
- Lot 2. Elephant heart
- Lot 3. Omaha
- Lot 4. Santa Rosa
- Lot 5. Red Heart
- Lot 6. Superior
- Lot 7. Mt. Royal



Class 21- GRAPES (3 bunches)

- Lot 1. Concord
- Lot 2. Niagara
- Lot 3. White grapes
- Lot 4. Coco-red



Class 22- PEACHES (3 per entry)

- Lot 1. Budded peaches (white)
- Lot 2. Budded peaches (yellow)
- Lot 3. Red have
- Lot 4. Seedling peaches (white)
- Lot 5. Seedling peaches (yellow)
- Lot 6. Reliance



Class 23- APRICOTS (5 per entry)

- Lot 1. Perfection
- Lot 2. Wanatchee
- Lot 3. Goldrich
- Lot 4. Reval

Class 24 - BERRIES (10 berries)

- Lot 1. Everbearing strawberries
- Lot 2. Everbearing raspberries
- Lot 3. Late spring or summer berries or cherries



Class 25 - MONSTER VEGETABLES

Entries should be a single specimen, mature, and must be of sound, good quality and natural color, and in clean condition. Exhibits in this class CANNOT be shown in any other class. Judging will be by weight and length

- | | |
|-------------------|-----------------------------|
| Lot 1. Cabbage | Lot 7. Pumpkin |
| Lot 2. Cantaloupe | Lot 8. Tomato |
| Lot 3. Cucumber | Lot 9. Watermelon |
| Lot 4. Eggplant | Lot 10. Zucchini |
| Lot 5. Onion | Lot 11. Any other vegetable |
| Lot 6. Potato | |

Class 26 - VEGETABLE SPECIAL (oddy in nature, 1 per lot)

- Lot 1. Oddity in nature, potato
- Lot 2. Oddity in nature, tomato
- Lot 3. Oddity in nature, any other



Class 27 - BEST DRESSED VEGETABLE (ages 12 years and up)

Create your own character using plant material.

- Lot 1. Cucumber
- Lot 2. Pepper
- Lot 3. Potato
- Lot 4. Pumpkin

Class 28 - BEST DRESSED VEGETABLE (ages 5-11 years)

Create your own character using plant material

- Lot 1. Cucumber
- Lot 2. Pepper
- Lot 3. Potato
- Lot 4. Pumpkin
- Lot 5. Squash
- Lot 6. Other

Class 29 - COLLECTION OF GARDEN PRODUCTS

Display must be grown and created by the exhibitor BRING YOUR OWN BASKET. No decorations on or with the basket. Each vegetable variety should be in a suitable amount to make the basket an attractive exhibit.

- Lot 1. Basket of vegetables (ages 12 and over)
Exhibit at least 3 and not more than 8 different varieties.
- Lot 2. Basket of vegetables (ages 5 through 11 years)
Exhibit at least 3 and not more than 8 different varieties.
- Lot 3. Basket of small vegetables (ages 12 and over)
Basket not to exceed 8 inches in any dimension.
- Lot 4. Basket of small vegetables (ages 5 through 11 years)
Basket not to exceed 8 inches in any dimension.
- Lot 5. Cornucopia (ages 12 and over)
Exhibit filled with vegetables, fruits, flowers or a combination.
- Lot 6. Cornucopia (ages 5 through 11 years)
Exhibit filled with vegetables, fruits, flowers or a combination.



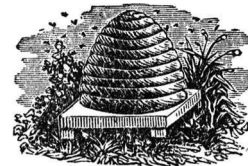
HERBS ARE IN THE FLOWERS DEPARTMENT

Class 30 - MISCELLANEOUS

- Lot 1. Hedgeballs (2)
- Lot 2. Peanuts (2)
- Lot 3. Walnuts (2)
- Lot 4. Sunflower (1)

Class 31 - HONEY

- Lot 1. One jar of honey
- Lot 2. One comb of honey



Class 32 - EGGS

Enter on Tuesday morning, 8-10 along with all agricultural products and crops.

Rules: Enter 1 dozen fresh eggs in a 1 dz. egg container.

1. Eggs are a selection of the exhibitor's ability
2. Eggs will be judged for interior quality, uniformity of weight, size and shape, shell texture and cleanliness of shell.
3. Do Not refrigerate eggs before judging.

- Lot 1. White Eggs
- Lot 2. Brown Eggs
- Lot 3. Other Colored Eggs

OPEN CLASS SMALL ANIMAL DEPARTMENT

(Poultry & Rabbits Only)

See page 7 for prize values and judging process.

GENERAL INFORMATION: No entry fee for poultry or rabbits. All exhibitors must provide feed as well as containers for feed and water for each cage. It is the responsibility of all exhibitors to feed and water their rabbits and chickens daily.

No premiums will be paid for poultry if cages are not cleaned at the time they are released. Must be inspected by Superintendent to receive premiums. It is illegal to use drugs not approved by USDA in meat animals.

POULTRY RULES: Only birds of standard breeds will be admitted. Chickens can be shown only as single birds or pens. Pens consist of two (2) females and one (1) male, except egg production. No animals can be shown for more than one premium. Animals showing signs of disease or not presentable will not be admitted. Birds shall not be permitted to enter unless the exhibitor shall, on entering the poultry, sign a declaration that, to the best of his knowledge, the poultry entries and source of flock or flocks are free from any evidence of, and were not recently exposed to, Newcastle disease or any infectious or transmissible disease.

POULTRY - STANDARD BREEDS

Single Birds: First, Second, Third and Fourth Premiums. Pens: First, Second, Third and Fourth Premiums. Grand Champion Male and Female Premiums. Definitions: Cock, a male bird hatched in 2021 and is at least a year old by fair week; Cockerel, a male bird hatched during 2021; Hen, a female bird hatched in 2021 and is at least 1 year old by fair week; Pullet, a female bird hatched during 2021. With Ducks and Geese, a bird over 1 year old is considered "old".

Class 1 - STANDARD CHICKENS

- Lot 1. Cockerel
- Lot 2. Pullet
- Lot 3. Hen
- Lot 4. Cock
- Lot 5. Trio
- Lot 6. Standard hens & chickens



Class 2 - STD CHICKEN PENS

- Lot 1. Pen of broilers
- Lot 2. Egg Production (pen of 3 layers)
- Lot 3. Pen of hybrids

Class 3 - TURKEYS

- Lot 1. Turkey tom
- Lot 2. Turkey hen

Class 4 - SMALL DUCKS

- Lot 1. Small duck
- Lot 2. Small drake

Class 5 - YOUNG DUCKS

- Lot 1. Young duck
- Lot 2. Young drake

Class 6 - OLD DUCKS

- Lot 1. Old Duck
- Lot 2. Old Drake

Class 7 - YOUNG GEESE

- Lot 1. Young goose
- Lot 2. Young gander

Class 8 - OLD GEESE

- Lot 1. Old Goose
- Lot 2. Old Gander



Class 9 - BANTAMS

- Lot 1. Bantam hen
- Lot 2. Bantam cock
- Lot 3. Bantam cockerel
- Lot 4. Bantam pullet
- Lot 5. Bantam trio
- Lot 6. Bantam hen & chicks



Class 10 - PIGEONS

- Lot 1. Pigeon pair
- Lot 2. Pigeon male
- Lot 3. Pigeon female

PREMIUMS FOR POULTRY.

Single birds: Purple \$2.00, Blue, \$1.50; Red, \$1.25; White, \$1.00.

Pens: Purple, \$2.00; Blue, \$1.75; Red, \$1.50; White, \$1.00. Grand Champion male and female, \$3.00 each. Reserve Grand Champion \$2.75

RABBITS

RABBIT RULES: All crates, boxes, or containers and vehicles used for transporting the animal to the Fair shall have been thoroughly cleansed and disinfected. Exhibitors are required to bring feed or container, as this is not furnished by the management. Only four (4) rabbits may be shown by each exhibitor. **Rabbits will be judged by breed.** Only purebred rabbits are allowed to show in Classes 1 and 2. All crossbred rabbits must show in Class 3.

Class 1 - COMMERCIAL RABBITS (Purebreds Only)

- Lot 1. Breeding junior doe (under 6 months)
- Lot 2. Breeding junior buck (under 6 months)
- Lot 3. Breeding intermediate doe (6-8 months)
- Lot 4. Breeding intermediate buck (6-8 months)
- Lot 5. Breeding senior doe (over 8 months)
- Lot 6. Breeding senior buck (over 8 months)
- Lot 7. Small fryer (under 4 pounds)
- Lot 8. Large fryer (4-5 1/2 pounds)
- Lot 9. Market pen (3 bunnies between 3-5 1/2 pounds)
- Lot 10. Fur (judges for best quality fur). One entry per exhibitor
- Lot 11. Doe and litter (litter 6 weeks and younger)

Class 2 - RABBITS - FANCY RABBITS

- Lot 12. Junior Doe (under 6 months of age)
- Lot 13. Junior Buck (under 6 months of age)
- Lot 14. Senior Doe (6 months of age and older)
- Lot 15. Senior Buck (6 months of age and older)
- Lot 16. Fur (Judges for best quality fur) One entry per exhibitor

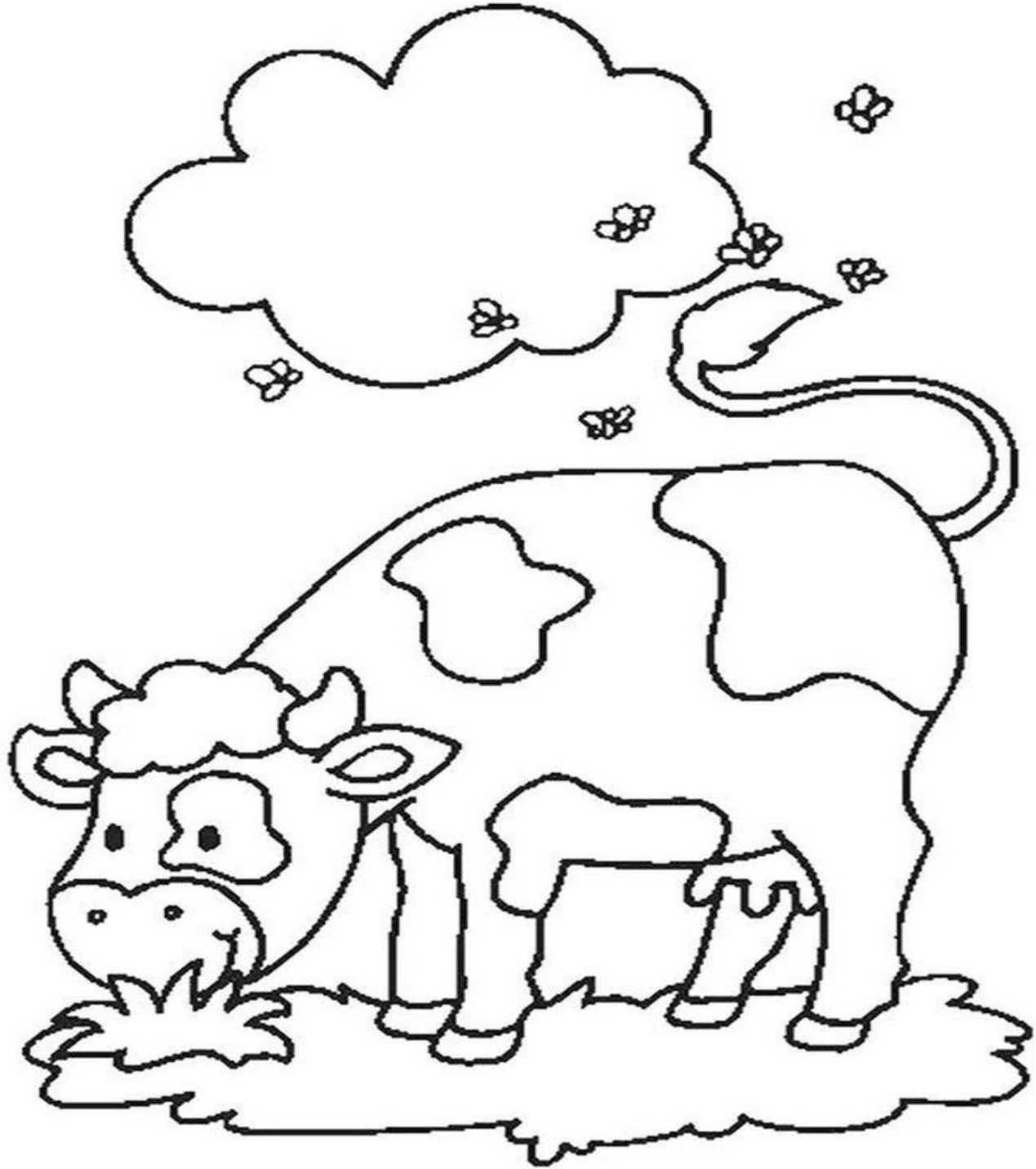
Class 3 - CROSSBREDS THAT DO NOT MEET BREED STANDARDS

- Lot 17. Pet (crossbreeds)

PREMIUMS FOR RABBITS

Premiums for rabbits: Purple, \$2.00; Blue, \$1.50; Red, \$1.25; White, \$1.00. Grand Champion, \$3.00. Reserve Champion \$2.75





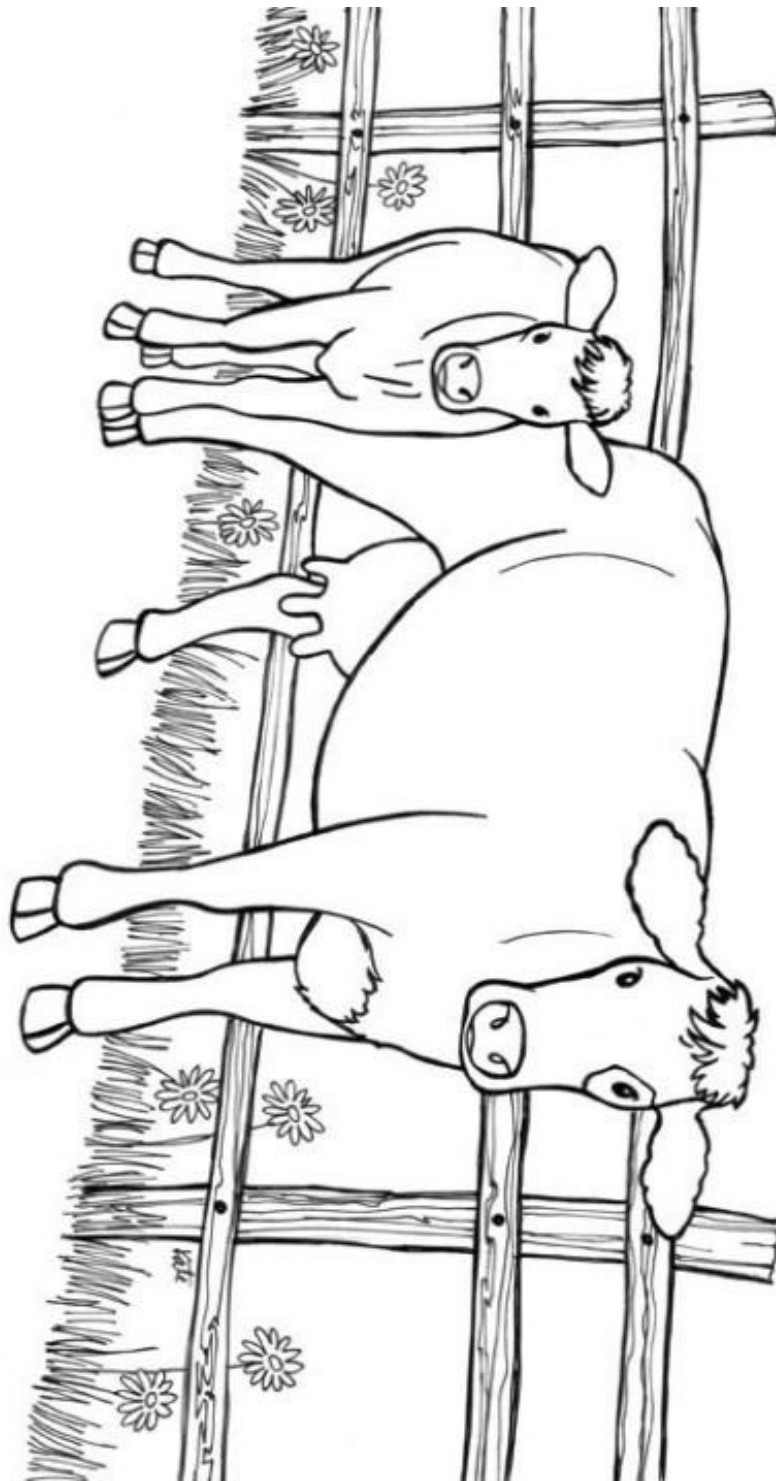
Color Your Way to the Fair ages 3-4

Color this picture and enter it in the Cass County Fair Coloring Contest

Rules: Any type of coloring medium can be used. The work must be done by the entrant. Only one entry per child. Bring this colored picture to the Cass County Fair Board Office on the in the Exposition Center by 8pm on Thursday. Winners will be named at 6:30pm on Friday, in front of the Fair Office at the Expo Center. Prizes (in each age division) will include: First Place - 10 free ride tickets to the county fair carnival; Runner-up - 5 free ride tickets to the county fair carnival.

Name: _____ Address: _____

Phone: _____ Parent's Name _____



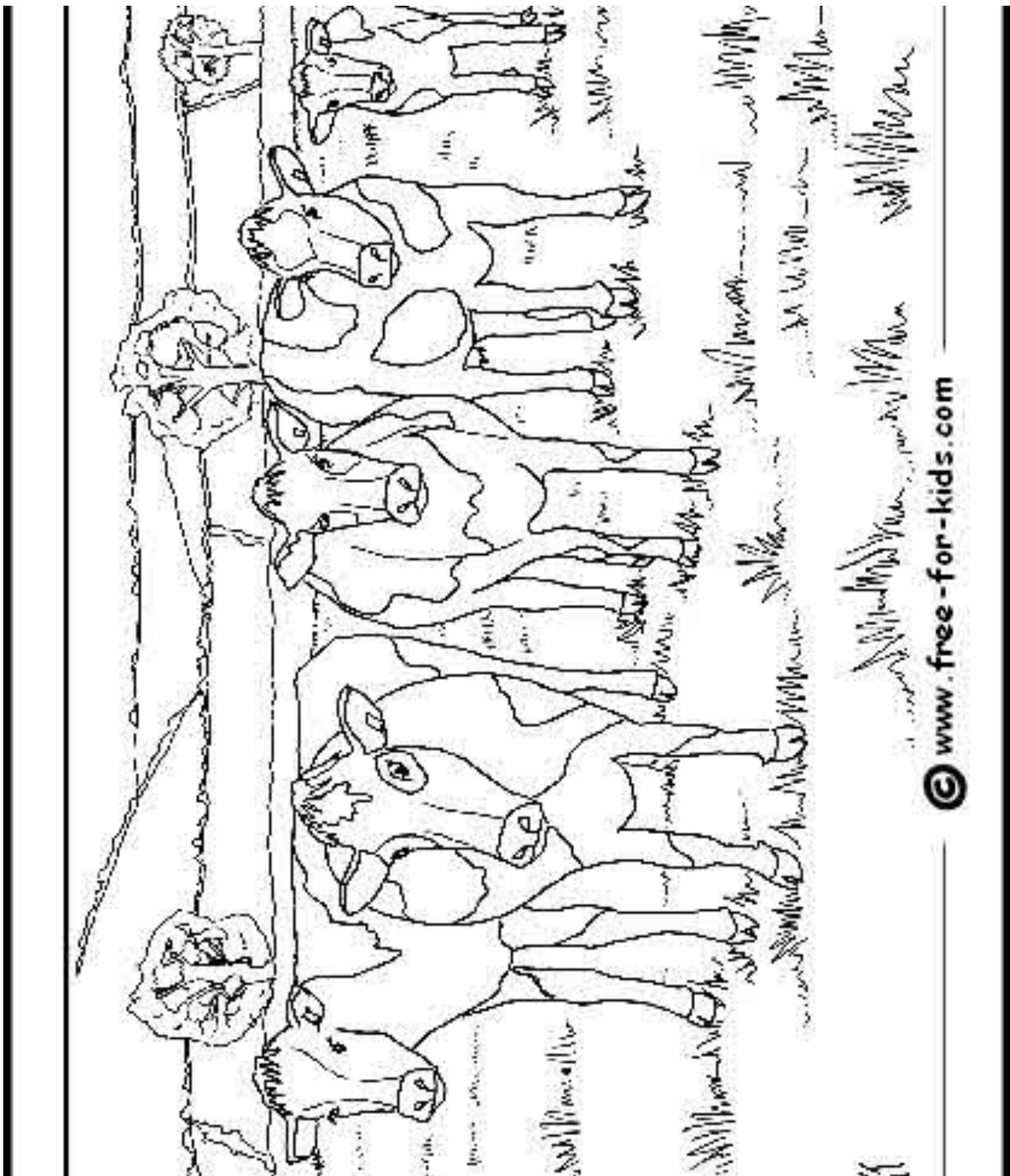
Color Your Way to the Fair ages 5-6

Color this picture and enter it in the Cass County Fair Coloring Contest

Rules: Any type of coloring medium can be used. The work must be done by the entrant. Only one entry per child. Bring this colored picture to the Cass County Fair Board Office on the in the Exposition Center by 8pm on Thursday . Winners will be named at 6:30pm on Friday, in front of the Fair Office at the Expo Center. Prizes (in each age division) will include: First Place - 10 free ride tickets to the county fair carnival; Runner-up - 5 free ride tickets to the county fair carnival.

Name: _____ Address: _____

Phone: _____ Parent's Name _____



Color Your Way to the Fair ages 7-8

Color this picture and enter it in the Cass County Fair Coloring Contest

Rules: Any type of coloring medium can be used. The work must be done by the entrant. Only one entry per child. Bring this colored picture to the Cass County Fair Board Office on the in the Exposition Center by 8pm on Thursday. Winners will be named at 6:30pm on Friday, in front of the Fair Office at the Expo Center. Prizes (in each age division) will include: First Place - 10 free ride tickets to the county fair carnival; Runner-up - 5 free ride tickets to the county fair carnival.

Name: _____ Address: _____

Phone: _____ Parent's Name _____

2022 SUPREME CHAMPION SPONSOR

AGRI-BUILDERS
• LLC •



EARTH MOVING • FARM DRAINAGE • EXCAVATING

ELMWOOD, NEBRASKA

402.802.0438

402.429.4302

2022 SUPREME CHAMPION SPONSOR



| GRAIN | AGRONOMY | FEED | ENERGY |

LEADING THE WAY TO DEVELOP GENERATIONAL SUCCESS.

At Frontier Cooperative we empower our team to provide an experience that enables our owners and communities to prosper.

Come grow with us. Visit www.frontiercooperative.com/careers.



FRONTIER
COOPERATIVE

Do the Right Thing | Make a Difference | Better our Best | Create Opportunities | Support the Frontier Family

2022 SUPREME CHAMPION SPONSOR



Cass County Farm Bureau Federation

2302 W 8th Ave, Suite 1

Plattsmouth, NE 68048

402-296-4999

2022 SUPREME CHAMPION SPONSOR



WILBUR-ELLIS
AGRIBUSINESS

(402) 298-8550 | 606 Wiles Road, Plattsmouth, NE 68048

Wilbur-Ellis can provide valuable resources to help you grow smart, increase productivity, and reduce loss. Talk to a pro at 606 Wiles Rd, Plattsmouth, NE 68048 to find out what we can do for you.

Phone 402-298-8550

2022 SUPREME CHAMPION SPONSOR



MIKE FRITZ
SALES

Phone: 402-867-3771
Toll-Free: 800-759-1520
Fax: 402-867-2442

28008 Mill Road
Murdock, NE 68407

e-mail: mike@stockseed.com
www.stockseed.com

2022 SUPREME CHAMPION SPONSOR



**FOUNDED IN FAITH.
FORGED IN AMERICA.**

Isaac Pieper | Seed Advisor | 402.405.2828



2022 SUPREME CHAMPION SPONSOR



PROUD OF OUR CASS COUNTY ROOTS



& PROUD TO BUILD ROADS



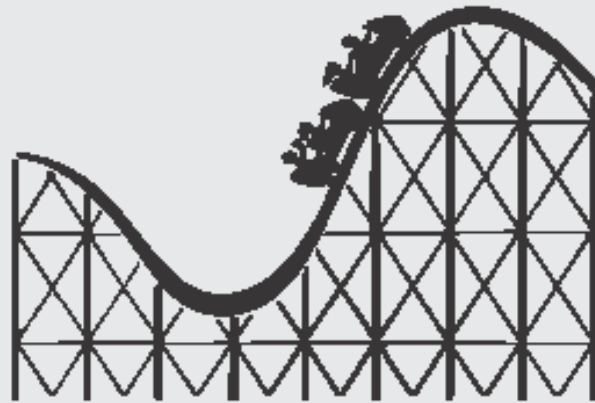
THAT LEAD TO THE FAIR



WWW.ROLOFFINC.COM

2022 SUPREME CHAMPION SPONSOR

BUMPY RIDE?



... Doesn't mean we get out of our seat.

Investing for the long run means
we embrace the journey to your financial goals—together.

Invest wisely, spend well. retirement • education • housing
big purchases • big changes
your money • your goals • your life

Leibman Financial Services • 228Main.com

(402) 234-2337 or (800) 550-6275

228 Main Street / P.O. Box 368 / Louisville, NE 68037

Securities offered through LPL Financial • Member FINRA/SIPC

2022 SUPREME CHAMPION SPONSOR

Service that will blow you away



Weeping Water, Ne

402.880.0280

DnTreeLLC@gmail.com

DnTreeLLC.com

Tree Pruning, Tree Removals, Stump Grinding, Plant Health Treatments, & Commercial Snow Removal

2022 GRAND CHAMPION SPONSORS



Mill Creek Auto Parts
1220 Sand Hill Rd
Louisville, NE 68037
402-234-7375

WESTOVER



ROCK & SAND

INC.

7800 Highway 50
Weeping Water,
NE 68463
402-267-7765

2022 GRAND CHAMPION SPONSORS



JAMES S. MARCH

402.297.7860

JSMCONCRETE74@GMAIL.COM



Call or text Mike for
more information:
402.840.0468

Seed Solutions

- Corn, Soybeans, Cover Crops, Alfalfa

Seed Treatment

- Fungicide, Insecticide and Biologicals
- Volume Discounts Available

Precision Soil Sampling

- Several Packages Available
- Unlimited Grid Sizes
- Prescriptions Included
- Nitrate Samples

Chemical & Fertility options available



More than a number.

2022 GRAND CHAMPION SPONSORS

A resource for Nebraskans
who are ready to quit tobacco

**NEBRASKA
TOBACCO
QUITLINE**

Call the Quitline for
personalized support,
advice, and coaching.

QuitNow.ne.gov

NEBRASKA DEPARTMENT OF HEALTH & HUMAN SERVICES
DIVISION OF PUBLIC HEALTH • TOBACCO FREE NEBRASKA

It's free, confidential,
and available 24/7.

1-800-QUIT-NOW
(784-8669)

1-855-DÉJELO-YA
(335-3569)

WE'RE
NEBRASKA
IN A BANK

Nebraska is strong, from all
the ways we lift each other.



 **Pinnacle Bank**

THE WAY BANKING SHOULD BE
LOUISVILLE 218 Main Street, 402.234.2155

2022 GRAND CHAMPION SPONSOR

LEADER IN AGRICULTURE

For 130 years, we've helped farmers and livestock producers grow and thrive. If you're looking for a strong financial partner to build your agricultural business, visit Citizens State Bank today.



Plattsmouth East

120 North 6th Street
Plattsmouth, NE 68048
402.296.0330

Plattsmouth West

2020 West 8th Avenue
Plattsmouth, NE 68048
402.296.3333

Papillion

754 Gold Coast Drive Suite #101
Papillion, NE 68046
402.934.4610

citstatebank.com



2022 GRAND CHAMPION SPONSOR

Solutions for Every Field.



257 N 30 Rd
Syracuse, NE

402-269-2241

2022 GRAND CHAMPION SPONSOR



2022 GRAND CHAMPION SPONSOR

Lubben Veterinary Service, LLC

Providing quality veterinary care to all of God's creatures great and small.

1276 Sand Hill Circle, Suite 1
Louisville, NE 68037

Visit our online store:

LubbenVeteri-
nary.myvetstoreonline.pharmacy/
shop

Scott R. Lubben, DVM

Owner

Office-402.234.1054

Fax-402.234.1058

Mobile-402.297.8315

srldvm@lubbenveterinary.com

www.lubbenveterinary.com

2022 RESERVE CHAMPION
SPONSOR



Kerford Limestone Company

36110 Fletcher
Weeping Water, NE 68463
402-267-2415

<https://kerfordlimestone.com/>
kerfordinfo@kerfordlimestone.com

2022 RESERVE CHAMPION
SPONSOR

Nutrien
Ag Solutions™

1077 County Road B
Ashland, NE 68003

Keith Asher
Manager
Agronomist

c 402.440.6401
t 402.944.2436
keith.asher@nutrien.com
nutrienagsolutions.com

2022 RESERVE CHAMPION
SPONSOR



(800) 234-7456

(402) 234-2945

Louisville , NE

2022 RESERVE CHAMPION
SPONSOR



2022 RESERVE CHAMPION
SPONSOR



Bobcat of Omaha
8701 S 145th St
Omaha, NE 68138
866-742-3579

2022 RESERVE CHAMPION



2022 RESERVE CHAMPION
SPONSOR



402-719-1534
492-297-2255

Jon Schram
Schramseeds@hotmail.com
18880 S. 156th St
Springfield, NE 680059

2022 RESERVE CHAMPION
SPONSOR



Louisville 402-234-3333
Plattsmouth 402-298-4747

2022 PURPLE RIBBON SPONSORS




Family Owned and Operated
Joe Langfeldt

Office - 402-234-2700 Joe - 402-672-1941
 Fax - 402-253-8333 joelangfeldt@yahoo.com
 www.langfeldtdoorsne.com



Channel Seed, Jim Jansen, Dealer
 jim.janson@channelseedsmen.com
 402-297-2998



306 Main St
 Louisville, NE 68037

Sales: 877-248-0175
 Service: 866-662-1644



LEE A. SAPP

Phone: 402-944-3367 e-mail: lee@lsford.com
 Fax: 402-944-3637 www.lsford.com



BURROWS TRACTS REAL ESTATE

BJ BURROWS | OWNER / BROKER

P: 402.525.7722 E: BJ@BURROWSTRACTS.COM W: WWW.BURROWSTRACTS.COM



Seitec GENETICS
 YOUR FARM. OUR FOCUS.

Heath Vogt
 LEAP Plot Manager / Area Product Manager

731 334th Street
 Elmwood NE 68349

Mobile: (402) 214-0695
 heath.vogt@seitec.com
 www.seitec.com

Seitec Genetics, 120 E Deborah Ave., Fremont, NE 68025 (800) 529-4353



2022 PURPLE RIBBON SPONSORS

Wiese Seed

@WieseSeed · Agricultural Cooperative

Phone: 402-616-5913 Facebook: Wiese Seed

Derby's Heating & Air Inc

(402) 234-3115

902 Prairie Hill Drive

Louisville, NE



Serving Our Communities... Investing in You.

www.FirstBankNE.com | Est. 1882

Wahoo 402.443.4117	Syracuse 402.269.2145	Sterling 402.866.4191	Burchard 402.865.5325
------------------------------	---------------------------------	---------------------------------	---------------------------------



A CRH COMPANY



*Serving local farms, families and businesses since 1884.
We welcome the opportunity to work with you!*

Eagle Branch 402.781.2315 | Talmage Branch 402.264.2795
Syracuse Loan Production Office 402.269.2283



BankRiverstone.com



BUNGE North America

195060 Bunge Ave.

Council Bluffs, IA 51503

- **Fresh Raw Milk**
- **Cream**
- **Farm Fresh Brown Eggs**
- **USDA Inspected Beef**
- **Dressed Chickens**

*All Products are Free of
Antibiotics & Hormones*

9820 HWY 50
Murdock, NE 68407

**Duane & Jill
Glasshoff**
402-657-7609



**Sam & Laura
Glasshoff**
402-660-9530

2022 BLUE RIBBON SPONSORS

Weeping Water Express Lane

Bond Trucking, LLC

Campbell's Nursery

W-M Farms Inc.

Hoss Lawn Care

Western National Bank

Big Rig Truck Accessories

Stander Trucking Inc.

Behrns Family Seed

Todd Valley Plumbing & Heating

Edward Jones-Brad Ksiazek

Bornemeier Well Drilling

Hope's Closet

HyVee Plattsmouth

Mary Frances Reinke

Meeske Hardware

Mowen Owen Lawn & Garden LLC

Quality Signs

Spoehr's Wet Basement Solutions

Plattsmouth Animal Hospital

Thompson & Thompson Inc.

Wade Insurance Agency

American Exchange Bank

N & W Transfer Inc.

2022 FRIENDS OF THE FAIR SPONSORS

Cornerstone Bank

Buel Trucking Inc.

State Farm—Derek Bird

Kubat Health Care

First National Bank

Farmers & Merchants Bank

Marshal Funeral Chapels

April D Cover Law

Fusselman-Allen-Harvey-Funeral Home

Brian P. Harvey Funeral Home

Keckler Oil Co. Inc.

Weeping Water Dental

Corn Growers State Bank

Syracuse Area Health

Hammons Family Ent Inc.

2022 SUPREME CHAMPION SPONSOR



*330 17th St
Syracuse, NE 68446
402-269-2310*

OUR MISSION

To be a leader and trusted partner in providing quality products, support, and innovative solutions to agricultural producers in the Midwest.